

11 FLOOR PLANS OF RESIDENTIAL PROPERTIES IN THE DEVELOPMENT

發展項目的住宅物業的樓面平面圖

Legend of the terms and abbreviations used on the Floor Plans:

樓面平面圖上使用之名詞及簡稱的圖例：

A/C PLATFORM = Air-conditioning Platform = 冷氣機平台

ARCHITECTURAL FEATURE = 建築裝飾

ARCHITECTURAL FINIS = 建築裝飾飾

ALUM. CLADDING = Aluminium Cladding = 鋁質蓋板

ALUM. ARCHITECTURAL FINIS AT */F AND */F = Aluminium Architectural fins = 鋁質建築裝飾飾於*樓及*樓

BAL = Balcony = 露台

BATH = Bathroom = 浴室

B.R.1 = Bedroom 1 = 睡房1

B.R.2 = Bedroom 2 = 睡房2

DIN. = Dining Room = 飯廳

DN = Down = 落

ELV. CABINET = Extra-low Voltage Cabinet = 特低壓電線櫃

ELV. DUCT/ELV DUCT = Extra-low Voltage Duct = 特低壓電線櫃管

FLAT ROOF = 平台

FLAT = 單位

HALL = 大堂

KIT. = Kitchen = 廚房

LAV. = Lavatory = 洗手間

LIV. = Living Room = 客廳

LIFT = 升降機

LIFT HALL = 升降機大堂

L.W. = Light Well = 天井

M.B.R. = Master Bedroom = 主人睡房

M.BATH = Master Bathroom = 主人浴室

P.D. = Pipe Duct = 管道槽

RC PLINTH = 鋼筋混凝土

SER. ROOM = Servant Room = 傭人房

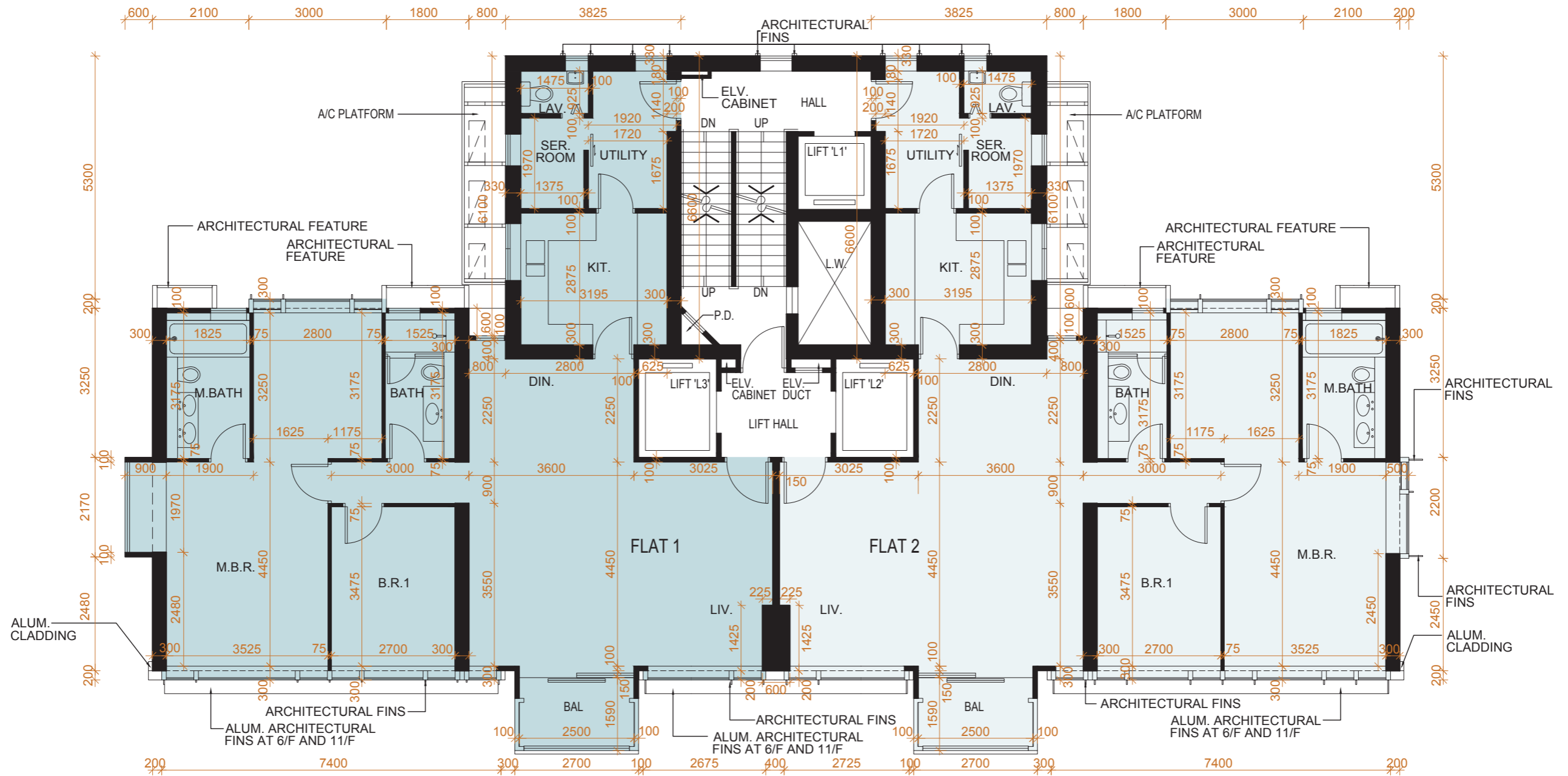
UTILITY = 工作間

UP = 上

11 FLOOR PLANS OF RESIDENTIAL PROPERTIES IN THE DEVELOPMENT

發展項目的住宅物業的樓面平面圖

BLOCK A 2ND – 11TH FLOOR PLAN A座 2樓至11樓樓面平面圖



Remarks:
The dimensions of floor plans are all in millimeters.

備註：
樓面平面圖所列之尺寸為以毫米標示。

Scale 比例 : 0 5 10M(米)

11 FLOOR PLANS OF RESIDENTIAL PROPERTIES IN THE DEVELOPMENT

發展項目的住宅物業的樓面平面圖

BLOCK A 2ND – 11TH FLOOR PLAN A座 2樓至11樓樓面平面圖

	Block 座數	Floor 樓層	Flat 單位	
			1	2
The thickness of the floor slabs (excluding plaster) of each residential property (mm) 每個住宅物業的樓板(不包括灰泥)的厚度(毫米)	Block A A座	2/F - 11/F 2樓至11樓	100, 125, 150	100, 125, 150
The floor-to-floor height of each residential property (mm) 每個住宅物業的層與層之間的高度(毫米)			2800	2800

The internal areas of the residential properties on the upper floors will generally be slightly larger than those on the lower floors because of the reducing thickness of the structural walls on the upper floors.

Notes:

1. The internal ceiling height within residential properties may vary due to structural, architectural and/or decoration design variations.
2. Please refer to page 19 of this sales brochure for the terms and abbreviations in studying the floor plans.

因住宅物業的較高樓層的結構牆的厚度遞減，較高樓層的內部面積，一般比較低樓層的內部面積稍大。

備註：

1. 住宅物業之天花高度將會因應其結構、建築及/或裝修設計上的差異而有所不同。
2. 請參閱本售樓說明書第19頁之圖例以協助閱讀樓面平面圖之名稱和簡稱。

11 FLOOR PLANS OF RESIDENTIAL PROPERTIES IN THE DEVELOPMENT

發展項目的住宅物業的樓面平面圖

BLOCK A 12TH – 13TH FLOOR PLAN
A座 12樓至13樓樓面平面圖



Remarks:
The dimensions of floor plans are all in millimeters.

備註：
樓面平面圖所列之尺寸為以毫米標示。

Scale 比例 : 0 5 10M(米)

11 FLOOR PLANS OF RESIDENTIAL PROPERTIES IN THE DEVELOPMENT

發展項目的住宅物業的樓面平面圖

BLOCK A 12TH – 13TH FLOOR PLAN

A座 12樓至13樓樓面平面圖

	Block 座數	Floor 樓層	Flat 單位	
			1	2
The thickness of the floor slabs (excluding plaster) of each residential property (mm) 每個住宅物業的樓板(不包括灰泥)的厚度(毫米)	Block A A座	12/F - 13/F 12樓至13樓	100, 125, 150	100, 125, 150
The floor-to-floor height of each residential property (mm) 每個住宅物業的層與層之間的高度(毫米)			2800	2800

The internal areas of the residential properties on the upper floors will generally be slightly larger than those on the lower floors because of the reducing thickness of the structural walls on the upper floors.

Notes:

- The internal ceiling height within residential properties may vary due to structural, architectural and/or decoration design variations.
- Please refer to page 19 of this sales brochure for the terms and abbreviations in studying the floor plans.

因住宅物業的較高樓層的結構牆的厚度遞減，較高樓層的內部面積，一般比較低樓層的內部面積稍大。

備註：

- 住宅物業之天花高度將會因應其結構、建築及/或裝修設計上的差異而有所不同。
- 請參閱本售樓說明書第19頁之圖例以協助閱讀樓面平面圖之名稱和簡稱。

11 FLOOR PLANS OF RESIDENTIAL PROPERTIES IN THE DEVELOPMENT

發展項目的住宅物業的樓面平面圖

BLOCK A 14TH FLOOR PLAN A座 14樓樓面平面圖



Remarks:
The dimensions of floor plans are all in millimeters.

備註：
樓面平面圖所列之尺寸為以毫米標示。

Scale 比例 : 0 5 10M(米)

11 FLOOR PLANS OF RESIDENTIAL PROPERTIES IN THE DEVELOPMENT

發展項目的住宅物業的樓面平面圖

BLOCK A 14TH FLOOR PLAN A座 14樓樓面平面圖

	Block 座數	Floor 樓層	Flat 單位	
			1	2
The thickness of the floor slabs (excluding plaster) of each residential property (mm) 每個住宅物業的樓板(不包括灰泥)的厚度(毫米)	Block A A座	14/F 14樓	100, 125, 150	100, 125, 150
The floor-to-floor height of each residential property (mm) 每個住宅物業的層與層之間的高度(毫米)			2800	2800

The internal areas of the residential properties on the upper floors will generally be slightly larger than those on the lower floors because of the reducing thickness of the structural walls on the upper floors.

Notes:

1. The internal ceiling height within residential properties may vary due to structural, architectural and/or decoration design variations.
2. Please refer to page 19 of this sales brochure for the terms and abbreviations in studying the floor plans.

因住宅物業的較高樓層的結構牆的厚度遞減，較高樓層的內部面積，一般比較低樓層的內部面積稍大。

備註：

1. 住宅物業之天花高度將會因應其結構、建築及/或裝修設計上的差異而有所不同。
2. 請參閱本售樓說明書第19頁之圖例以協助閱讀樓面平面圖之名稱和簡稱。

11 FLOOR PLANS OF RESIDENTIAL PROPERTIES IN THE DEVELOPMENT

發展項目的住宅物業的樓面平面圖

BLOCK A 15TH FLOOR PLAN
A座 15樓樓面平面圖



Remarks:
The dimensions of floor plans are all in millimeters.

備註：
樓面平面圖所列之尺寸為以毫米標示。

Scale 比例 : 0 5 10M(米)

11 FLOOR PLANS OF RESIDENTIAL PROPERTIES IN THE DEVELOPMENT

發展項目的住宅物業的樓面平面圖

BLOCK A 15TH FLOOR PLAN A座 15樓樓面平面圖

	Block 座數	Floor 樓層	Flat 單位	
			1	2
The thickness of the floor slabs (excluding plaster) of each residential property (mm) 每個住宅物業的樓板(不包括灰泥)的厚度(毫米)	Block A A座	15/F 15樓	100, 125, 150	100, 125, 150
The floor-to-floor height of each residential property (mm) 每個住宅物業的層與層之間的高度(毫米)			2800	2800

The internal areas of the residential properties on the upper floors will generally be slightly larger than those on the lower floors because of the reducing thickness of the structural walls on the upper floors.

Notes:

1. The internal ceiling height within residential properties may vary due to structural, architectural and/or decoration design variations.
2. Please refer to page 19 of this sales brochure for the terms and abbreviations in studying the floor plans.

因住宅物業的較高樓層的結構牆的厚度遞減，較高樓層的內部面積，一般比較低樓層的內部面積稍大。

備註：

1. 住宅物業之天花高度將會因應其結構、建築及/或裝修設計上的差異而有所不同。
2. 請參閱本售樓說明書第19頁之圖例以協助閱讀樓面平面圖之名稱和簡稱。

11 FLOOR PLANS OF RESIDENTIAL PROPERTIES IN THE DEVELOPMENT

發展項目的住宅物業的樓面平面圖

BLOCK A 16TH – 17TH FLOOR PLAN

A座 16樓至17樓樓面平面圖

	Block 座數	Floor 樓層	Flat 單位	
			1	2
The thickness of the floor slabs (excluding plaster) of each residential property (mm) 每個住宅物業的樓板(不包括灰泥)的厚度(毫米)	Block A A座	16/F - 17/F 16樓至17樓	100, 125, 150	100, 125, 150
The floor-to-floor height of each residential property (mm) 每個住宅物業的層與層之間的高度(毫米)			2800	2800

The internal areas of the residential properties on the upper floors will generally be slightly larger than those on the lower floors because of the reducing thickness of the structural walls on the upper floors.

Notes:

- The internal ceiling height within residential properties may vary due to structural, architectural and/or decoration design variations.
- Please refer to page 19 of this sales brochure for the terms and abbreviations in studying the floor plans.

因住宅物業的較高樓層的結構牆的厚度遞減，較高樓層的內部面積，一般比較低樓層的內部面積稍大。

備註：

- 住宅物業之天花高度將會因應其結構、建築及/或裝修設計上的差異而有所不同。
- 請參閱本售樓說明書第19頁之圖例以協助閱讀樓面平面圖之名稱和簡稱。

11 FLOOR PLANS OF RESIDENTIAL PROPERTIES IN THE DEVELOPMENT

發展項目的住宅物業的樓面平面圖

BLOCK A 18TH – 19TH FLOOR PLAN
A座 18樓至19樓樓面平面圖



Remarks:
The dimensions of floor plans are all in millimeters.

備註：
樓面平面圖所列之尺寸為以毫米標示。

Scale 比例 : 0 5 10M(米)

11 FLOOR PLANS OF RESIDENTIAL PROPERTIES IN THE DEVELOPMENT

發展項目的住宅物業的樓面平面圖

BLOCK A 18TH – 19TH FLOOR PLAN

A座 18樓至19樓樓面平面圖

	Block 座數	Floor 樓層	Flat 單位	
			1	2
The thickness of the floor slabs (excluding plaster) of each residential property (mm) 每個住宅物業的樓板(不包括灰泥)的厚度(毫米)	Block A A座	18/F - 19/F 18樓至19樓	100, 125, 150	100, 125, 150
The floor-to-floor height of each residential property (mm) 每個住宅物業的層與層之間的高度(毫米)			2800	2800

The internal areas of the residential properties on the upper floors will generally be slightly larger than those on the lower floors because of the reducing thickness of the structural walls on the upper floors.

Notes:

1. The internal ceiling height within residential properties may vary due to structural, architectural and/or decoration design variations.
2. Please refer to page 19 of this sales brochure for the terms and abbreviations in studying the floor plans.

因住宅物業的較高樓層的結構牆的厚度遞減，較高樓層的內部面積，一般比較低樓層的內部面積稍大。

備註：

1. 住宅物業之天花高度將會因應其結構、建築及/或裝修設計上的差異而有所不同。
2. 請參閱本售樓說明書第19頁之圖例以協助閱讀樓面平面圖之名稱和簡稱。

11 FLOOR PLANS OF RESIDENTIAL PROPERTIES IN THE DEVELOPMENT

發展項目的住宅物業的樓面平面圖

BLOCK A 20TH – 21ST FLOOR PLAN A座 20樓至21樓樓面平面圖

	Block 座數	Floor 樓層	Flat 單位	
			1	2
The thickness of the floor slabs (excluding plaster) of each residential property (mm) 每個住宅物業的樓板(不包括灰泥)的厚度(毫米)	Block A A座	20/F - 21/F 20樓至21樓	100, 125, 150	100, 125, 150
The floor-to-floor height of each residential property (mm) 每個住宅物業的層與層之間的高度(毫米)			2800	2800

The internal areas of the residential properties on the upper floors will generally be slightly larger than those on the lower floors because of the reducing thickness of the structural walls on the upper floors.

Notes:

1. The internal ceiling height within residential properties may vary due to structural, architectural and/or decoration design variations.
2. Please refer to page 19 of this sales brochure for the terms and abbreviations in studying the floor plans.

因住宅物業的較高樓層的結構牆的厚度遞減，較高樓層的內部面積，一般比較低樓層的內部面積稍大。

備註：

1. 住宅物業之天花高度將會因應其結構、建築及/或裝修設計上的差異而有所不同。
2. 請參閱本售樓說明書第19頁之圖例以協助閱讀樓面平面圖之名稱和簡稱。

11 FLOOR PLANS OF RESIDENTIAL PROPERTIES IN THE DEVELOPMENT

發展項目的住宅物業的樓面平面圖

BLOCK A 22ND – 23RD FLOOR PLAN
A座 22樓至23樓樓面平面圖



Remarks:
The dimensions of floor plans are all in millimeters.

備註：
樓面平面圖所列之尺寸為以毫米標示。

Scale 比例 : 0 5 10M(米)

11 FLOOR PLANS OF RESIDENTIAL PROPERTIES IN THE DEVELOPMENT

發展項目的住宅物業的樓面平面圖

BLOCK A 22ND – 23RD FLOOR PLAN

A座 22樓至23樓樓面平面圖

	Block 座數	Floor 樓層	Flat 單位	
			1	2
The thickness of the floor slabs (excluding plaster) of each residential property (mm) 每個住宅物業的樓板(不包括灰泥)的厚度(毫米)	Block A A座	22/F - 23/F 22樓至23樓	100, 125, 150	100, 125, 150
The floor-to-floor height of each residential property (mm) 每個住宅物業的層與層之間的高度(毫米)			2800	2800

The internal areas of the residential properties on the upper floors will generally be slightly larger than those on the lower floors because of the reducing thickness of the structural walls on the upper floors.

Notes:

- The internal ceiling height within residential properties may vary due to structural, architectural and/or decoration design variations.
- Please refer to page 19 of this sales brochure for the terms and abbreviations in studying the floor plans.

因住宅物業的較高樓層的結構牆的厚度遞減，較高樓層的內部面積，一般比較低樓層的內部面積稍大。

備註：

- 住宅物業之天花高度將會因應其結構、建築及/或裝修設計上的差異而有所不同。
- 請參閱本售樓說明書第19頁之圖例以協助閱讀樓面平面圖之名稱和簡稱。

11 FLOOR PLANS OF RESIDENTIAL PROPERTIES IN THE DEVELOPMENT

發展項目的住宅物業的樓面平面圖

BLOCK A 24TH – 25TH FLOOR PLAN

A座 24樓至25樓樓面平面圖



Remarks:
The dimensions of floor plans are all in millimeters.

備註：
樓面平面圖所列之尺寸為以毫米標示。

Scale 比例 : 0 5 10M(米)

11 FLOOR PLANS OF RESIDENTIAL PROPERTIES IN THE DEVELOPMENT

發展項目的住宅物業的樓面平面圖

BLOCK A 24TH – 25TH FLOOR PLAN A座 24樓至25樓樓面平面圖

	Block 座數	Floor 樓層	Flat 單位	
			1	2
The thickness of the floor slabs (excluding plaster) of each residential property (mm) 每個住宅物業的樓板(不包括灰泥)的厚度(毫米)	Block A A座	24/F - 25/F 24樓至25樓	100, 125, 150	100, 125, 150
The floor-to-floor height of each residential property (mm) 每個住宅物業的層與層之間的高度(毫米)			2800	2800

The internal areas of the residential properties on the upper floors will generally be slightly larger than those on the lower floors because of the reducing thickness of the structural walls on the upper floors.

Notes:

- The internal ceiling height within residential properties may vary due to structural, architectural and/or decoration design variations.
- Please refer to page 19 of this sales brochure for the terms and abbreviations in studying the floor plans.

因住宅物業的較高樓層的結構牆的厚度遞減，較高樓層的內部面積，一般比較低樓層的內部面積稍大。

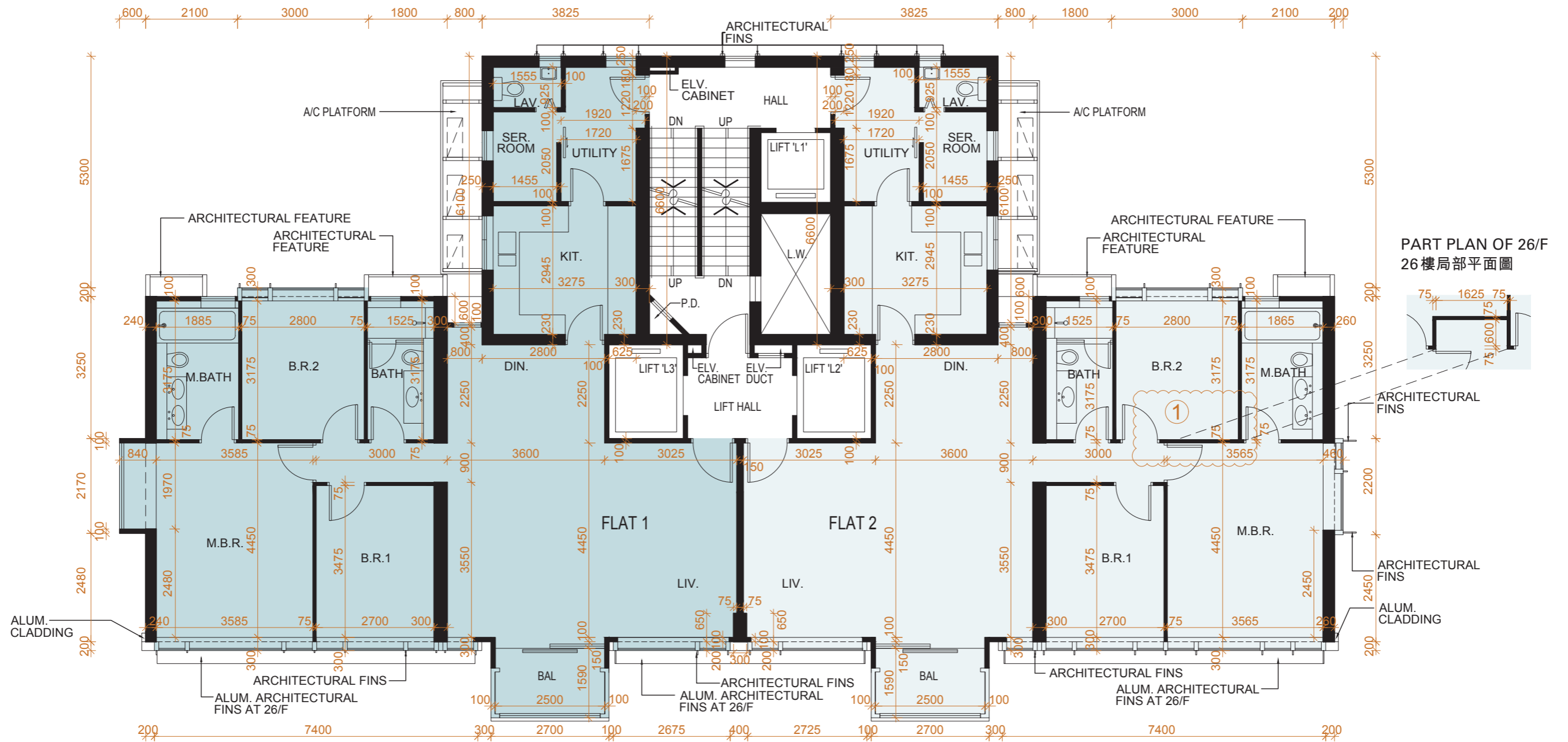
備註：

- 住宅物業之天花高度將會因應其結構、建築及/或裝修設計上的差異而有所不同。
- 請參閱本售樓說明書第19頁之圖例以協助閱讀樓面平面圖之名稱和簡稱。

11 FLOOR PLANS OF RESIDENTIAL PROPERTIES IN THE DEVELOPMENT

發展項目的住宅物業的樓面平面圖

BLOCK A 26TH – 27TH FLOOR PLAN A座 26樓至27樓樓面平面圖



Remarks:

The dimensions of floor plans are all in millimeters.

This part at Flat 2, 26/F, Block A has been altered by way as exempted works under the Buildings Ordinance after completion of the development. The latest condition of which is shown on the relevant latest layout plan. The alteration works are as follows: 1. Partition wall has been modified.

備註：

樓面平面圖所列之尺寸為以毫米標示。

A座26樓2號單位此部份因在發展項目落成後進行《建築物條例》豁免的工程而有所改動，現狀請參閱有關現狀間隔平面圖。該等改動如下：1. 修改間牆。

Scale 比例 : 0 5 10M(米)

11 FLOOR PLANS OF RESIDENTIAL PROPERTIES IN THE DEVELOPMENT

發展項目的住宅物業的樓面平面圖

BLOCK A 26TH – 27TH FLOOR PLAN A座 26樓至27樓樓面平面圖

	Block 座數	Floor 樓層	Flat 單位	
			1	2
The thickness of the floor slabs (excluding plaster) of each residential property (mm) 每個住宅物業的樓板(不包括灰泥)的厚度(毫米)	Block A A座	27/F 27樓	100, 125, 150	100, 125, 150
The floor-to-floor height of each residential property (mm) 每個住宅物業的層與層之間的高度(毫米)			2800	2800

The internal areas of the residential properties on the upper floors will generally be slightly larger than those on the lower floors because of the reducing thickness of the structural walls on the upper floors.

Notes:

1. The internal ceiling height within residential properties may vary due to structural, architectural and/or decoration design variations.
2. Please refer to page 19 of this sales brochure for the terms and abbreviations in studying the floor plans.

因住宅物業的較高樓層的結構牆的厚度遞減，較高樓層的內部面積，一般比較低樓層的內部面積稍大。

備註：

1. 住宅物業之天花高度將會因應其結構、建築及/或裝修設計上的差異而有所不同。
2. 請參閱本售樓說明書第19頁之圖例以協助閱讀樓面平面圖之名稱和簡稱。

11 FLOOR PLANS OF RESIDENTIAL PROPERTIES IN THE DEVELOPMENT

發展項目的住宅物業的樓面平面圖

BLOCK A 28TH – 29TH FLOOR PLAN

A座 28樓至29樓樓面平面圖

	Block 座數	Floor 樓層	Flat 單位	
			1	2
The thickness of the floor slabs (excluding plaster) of each residential property (mm) 每個住宅物業的樓板(不包括灰泥)的厚度(毫米)	Block A A座	28/F - 29/F 28樓至29樓	100, 125, 150	100, 125, 150
The floor-to-floor height of each residential property (mm) 每個住宅物業的層與層之間的高度(毫米)			2800	2800

The internal areas of the residential properties on the upper floors will generally be slightly larger than those on the lower floors because of the reducing thickness of the structural walls on the upper floors.

Notes:

- The internal ceiling height within residential properties may vary due to structural, architectural and/or decoration design variations.
- Please refer to page 19 of this sales brochure for the terms and abbreviations in studying the floor plans.

因住宅物業的較高樓層的結構牆的厚度遞減，較高樓層的內部面積，一般比較低樓層的內部面積稍大。

備註：

- 住宅物業之天花高度將會因應其結構、建築及/或裝修設計上的差異而有所不同。
- 請參閱本售樓說明書第19頁之圖例以協助閱讀樓面平面圖之名稱和簡稱。

11 FLOOR PLANS OF RESIDENTIAL PROPERTIES IN THE DEVELOPMENT

發展項目的住宅物業的樓面平面圖

BLOCK A 30TH FLOOR PLAN A座 30樓樓面平面圖



Remarks:
The dimensions of floor plans are all in millimeters.

備註：
樓面平面圖所列之尺寸為以毫米標示。

Scale 比例 : 0 5 10M(米)

11 FLOOR PLANS OF RESIDENTIAL PROPERTIES IN THE DEVELOPMENT

發展項目的住宅物業的樓面平面圖

BLOCK A 30TH FLOOR PLAN A座 30樓樓面平面圖

	Block 座數	Floor 樓層	Flat 單位	
			1	2
The thickness of the floor slabs (excluding plaster) of each residential property (mm) 每個住宅物業的樓板(不包括灰泥)的厚度(毫米)	Block A A座	30/F 30樓	100, 125, 150	100, 125, 150
The floor-to-floor height of each residential property (mm) 每個住宅物業的層與層之間的高度(毫米)			2800	2800

The internal areas of the residential properties on the upper floors will generally be slightly larger than those on the lower floors because of the reducing thickness of the structural walls on the upper floors.

Notes:

1. The internal ceiling height within residential properties may vary due to structural, architectural and/or decoration design variations.
2. Please refer to page 19 of this sales brochure for the terms and abbreviations in studying the floor plans.

因住宅物業的較高樓層的結構牆的厚度遞減，較高樓層的內部面積，一般比較低樓層的內部面積稍大。

備註：

1. 住宅物業之天花高度將會因應其結構、建築及/或裝修設計上的差異而有所不同。
2. 請參閱本售樓說明書第19頁之圖例以協助閱讀樓面平面圖之名稱和簡稱。

11 FLOOR PLANS OF RESIDENTIAL PROPERTIES IN THE DEVELOPMENT

發展項目的住宅物業的樓面平面圖

BLOCK B 1ST FLOOR PLAN B座 1樓樓面平面圖



Remarks:
The dimensions of floor plans are all in millimeters.

備註：
樓面平面圖所列之尺寸為以毫米標示。

Scale 比例 : 0 5 10M(米)

11 FLOOR PLANS OF RESIDENTIAL PROPERTIES IN THE DEVELOPMENT

發展項目的住宅物業的樓面平面圖

BLOCK B 1ST FLOOR PLAN B座 1樓樓面平面圖

	Block 座數	Floor 樓層	Flat 單位	
			1	2
The thickness of the floor slabs (excluding plaster) of each residential property (mm) 每個住宅物業的樓板(不包括灰泥)的厚度(毫米)	Block B B座	1/F 1樓	100, 125, 150	100, 125, 150
The floor-to-floor height of each residential property (mm) 每個住宅物業的層與層之間的高度(毫米)			2800	2800

The internal areas of the residential properties on the upper floors will generally be slightly larger than those on the lower floors because of the reducing thickness of the structural walls on the upper floors.

Notes:

1. The internal ceiling height within residential properties may vary due to structural, architectural and/or decoration design variations.
2. Please refer to page 19 of this sales brochure for the terms and abbreviations in studying the floor plans.

因住宅物業的較高樓層的結構牆的厚度遞減，較高樓層的內部面積，一般比較低樓層的內部面積稍大。

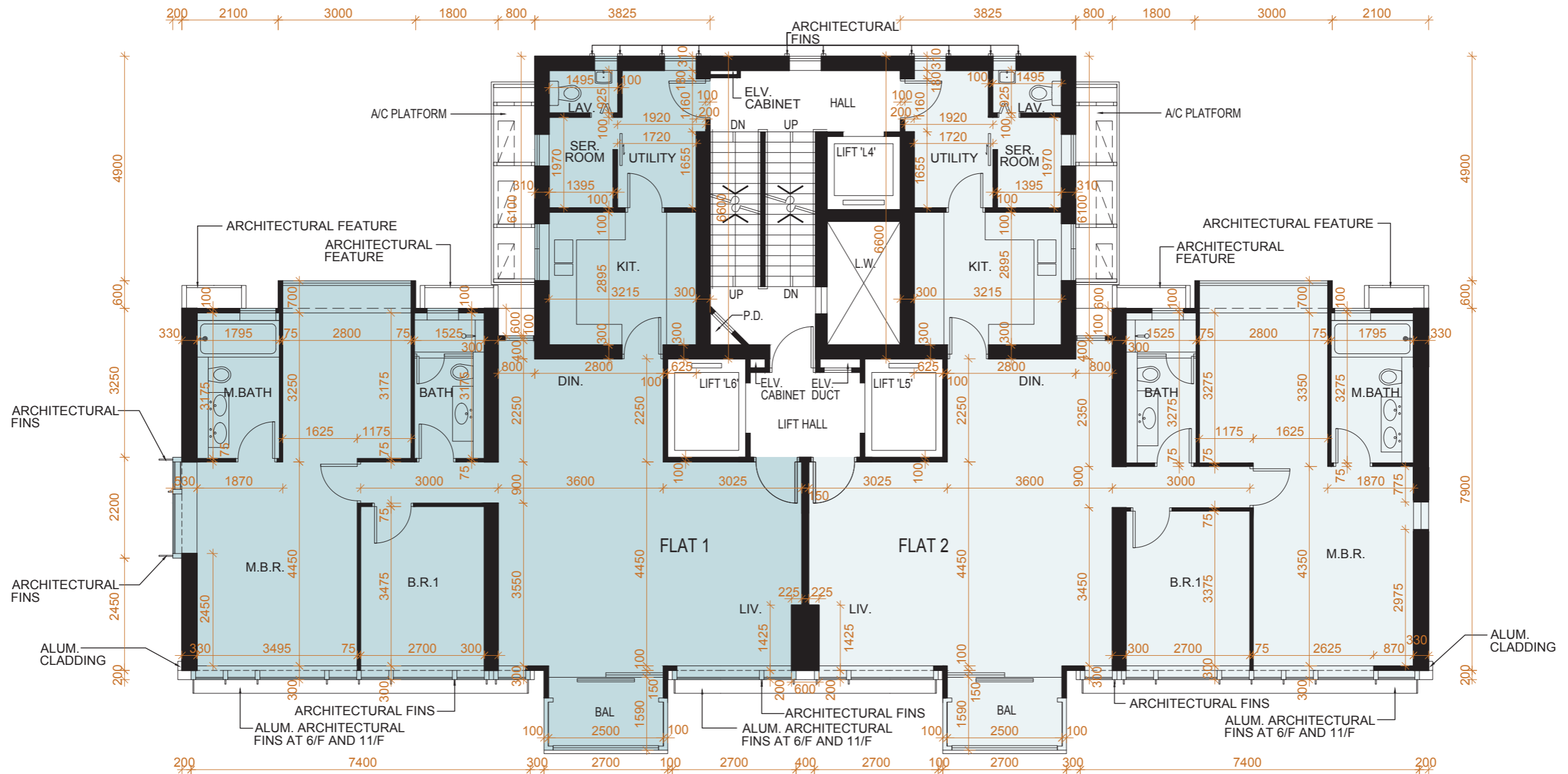
備註：

1. 住宅物業之天花高度將會因應其結構、建築及/或裝修設計上的差異而有所不同。
2. 請參閱本售樓說明書第19頁之圖例以協助閱讀樓面平面圖之名稱和簡稱。

11 FLOOR PLANS OF RESIDENTIAL PROPERTIES IN THE DEVELOPMENT

發展項目的住宅物業的樓面平面圖

BLOCK B 2ND – 11TH FLOOR PLAN B座 2樓至11樓樓面平面圖



Remarks:
The dimensions of floor plans are all in millimeters.

備註：
樓面平面圖所列之尺寸為以毫米標示。

Scale 比例 : 0 5 10M(米)

11 FLOOR PLANS OF RESIDENTIAL PROPERTIES IN THE DEVELOPMENT

發展項目的住宅物業的樓面平面圖

BLOCK B 2ND – 11TH FLOOR PLAN B座 2樓至11樓樓面平面圖

	Block 座數	Floor 樓層	Flat 單位	
			1	2
The thickness of the floor slabs (excluding plaster) of each residential property (mm) 每個住宅物業的樓板(不包括灰泥)的厚度(毫米)	Block B B座	2/F - 11/F 2樓至11樓	100, 125, 150	100, 125, 150
The floor-to-floor height of each residential property (mm) 每個住宅物業的層與層之間的高度(毫米)			2800	2800

The internal areas of the residential properties on the upper floors will generally be slightly larger than those on the lower floors because of the reducing thickness of the structural walls on the upper floors.

Notes:

- The internal ceiling height within residential properties may vary due to structural, architectural and/or decoration design variations.
- Please refer to page 19 of this sales brochure for the terms and abbreviations in studying the floor plans.

因住宅物業的較高樓層的結構牆的厚度遞減，較高樓層的內部面積，一般比較低樓層的內部面積稍大。

備註：

- 住宅物業之天花高度將會因應其結構、建築及/或裝修設計上的差異而有所不同。
- 請參閱本售樓說明書第19頁之圖例以協助閱讀樓面平面圖之名稱和簡稱。

11 FLOOR PLANS OF RESIDENTIAL PROPERTIES IN THE DEVELOPMENT

發展項目的住宅物業的樓面平面圖

BLOCK B 12TH – 13TH FLOOR PLAN

B座 12樓至13樓樓面平面圖



Remarks:
The dimensions of floor plans are all in millimeters.

備註：
樓面平面圖所列之尺寸為以毫米標示。

Scale 比例 : 0 5 10M(米)

11 FLOOR PLANS OF RESIDENTIAL PROPERTIES IN THE DEVELOPMENT

發展項目的住宅物業的樓面平面圖

BLOCK B 12TH – 13TH FLOOR PLAN

B座 12樓至13樓樓面平面圖

	Block 座數	Floor 樓層	Flat 單位	
			1	2
The thickness of the floor slabs (excluding plaster) of each residential property (mm) 每個住宅物業的樓板(不包括灰泥)的厚度(毫米)	Block B B座	12/F - 13/F 12樓至13樓	100, 125, 150	100, 125, 150
The floor-to-floor height of each residential property (mm) 每個住宅物業的層與層之間的高度(毫米)			2800	2800

The internal areas of the residential properties on the upper floors will generally be slightly larger than those on the lower floors because of the reducing thickness of the structural walls on the upper floors.

Notes:

1. The internal ceiling height within residential properties may vary due to structural, architectural and/or decoration design variations.
2. Please refer to page 19 of this sales brochure for the terms and abbreviations in studying the floor plans.

因住宅物業的較高樓層的結構牆的厚度遞減，較高樓層的內部面積，一般比較低樓層的內部面積稍大。

備註：

1. 住宅物業之天花高度將會因應其結構、建築及/或裝修設計上的差異而有所不同。
2. 請參閱本售樓說明書第19頁之圖例以協助閱讀樓面平面圖之名稱和簡稱。

11 FLOOR PLANS OF RESIDENTIAL PROPERTIES IN THE DEVELOPMENT

發展項目的住宅物業的樓面平面圖

BLOCK B 14TH FLOOR PLAN B座 14樓樓面平面圖



Remarks:
The dimensions of floor plans are all in millimeters.

備註：
樓面平面圖所列之尺寸為以毫米標示。

Scale 比例 : 0 5 10M(米)

11 FLOOR PLANS OF RESIDENTIAL PROPERTIES IN THE DEVELOPMENT

發展項目的住宅物業的樓面平面圖

BLOCK B 14TH FLOOR PLAN B座 14樓樓面平面圖

	Block 座數	Floor 樓層	Flat 單位	
			1	2
The thickness of the floor slabs (excluding plaster) of each residential property (mm) 每個住宅物業的樓板(不包括灰泥)的厚度(毫米)	Block B B座	14/F 14樓	100, 125, 150	100, 125, 150
The floor-to-floor height of each residential property (mm) 每個住宅物業的層與層之間的高度(毫米)			2800	2800

The internal areas of the residential properties on the upper floors will generally be slightly larger than those on the lower floors because of the reducing thickness of the structural walls on the upper floors.

Notes:

1. The internal ceiling height within residential properties may vary due to structural, architectural and/or decoration design variations.
2. Please refer to page 19 of this sales brochure for the terms and abbreviations in studying the floor plans.

因住宅物業的較高樓層的結構牆的厚度遞減，較高樓層的內部面積，一般比較低樓層的內部面積稍大。

備註：

1. 住宅物業之天花高度將會因應其結構、建築及/或裝修設計上的差異而有所不同。
2. 請參閱本售樓說明書第19頁之圖例以協助閱讀樓面平面圖之名稱和簡稱。

11 FLOOR PLANS OF RESIDENTIAL PROPERTIES IN THE DEVELOPMENT

發展項目的住宅物業的樓面平面圖

BLOCK B 15TH FLOOR PLAN B座 15樓樓面平面圖



Remarks:
The dimensions of floor plans are all in millimeters.

備註：
樓面平面圖所列之尺寸為以毫米標示。

Scale 比例 : 0 5 10M(米)

11 FLOOR PLANS OF RESIDENTIAL PROPERTIES IN THE DEVELOPMENT

發展項目的住宅物業的樓面平面圖

BLOCK B 15TH FLOOR PLAN B座 15樓樓面平面圖

	Block 座數	Floor 樓層	Flat 單位	
			1	2
The thickness of the floor slabs (excluding plaster) of each residential property (mm) 每個住宅物業的樓板(不包括灰泥)的厚度(毫米)	Block B B座	15/F 15樓	100, 125, 150	100, 125, 150
The floor-to-floor height of each residential property (mm) 每個住宅物業的層與層之間的高度(毫米)			2800	2800

The internal areas of the residential properties on the upper floors will generally be slightly larger than those on the lower floors because of the reducing thickness of the structural walls on the upper floors.

Notes:

1. The internal ceiling height within residential properties may vary due to structural, architectural and/or decoration design variations.
2. Please refer to page 19 of this sales brochure for the terms and abbreviations in studying the floor plans.

因住宅物業的較高樓層的結構牆的厚度遞減，較高樓層的內部面積，一般比較低樓層的內部面積稍大。

備註：

1. 住宅物業之天花高度將會因應其結構、建築及/或裝修設計上的差異而有所不同。
2. 請參閱本售樓說明書第19頁之圖例以協助閱讀樓面平面圖之名稱和簡稱。

11 FLOOR PLANS OF RESIDENTIAL PROPERTIES IN THE DEVELOPMENT

發展項目的住宅物業的樓面平面圖

BLOCK B 16TH – 17TH FLOOR PLAN

B座 16樓至17樓樓面平面圖



Remarks:
The dimensions of floor plans are all in millimeters.

備註：
樓面平面圖所列之尺寸為以毫米標示。

Scale 比例 : 0 5 10M(米)

11 FLOOR PLANS OF RESIDENTIAL PROPERTIES IN THE DEVELOPMENT

發展項目的住宅物業的樓面平面圖

BLOCK B 16TH – 17TH FLOOR PLAN

B座 16樓至17樓樓面平面圖

	Block 座數	Floor 樓層	Flat 單位	
			1	2
The thickness of the floor slabs (excluding plaster) of each residential property (mm) 每個住宅物業的樓板(不包括灰泥)的厚度(毫米)	Block B B座	16/F - 17/F 16樓至17樓	100, 125, 150	100, 125, 150
The floor-to-floor height of each residential property (mm) 每個住宅物業的層與層之間的高度(毫米)			2800	2800

The internal areas of the residential properties on the upper floors will generally be slightly larger than those on the lower floors because of the reducing thickness of the structural walls on the upper floors.

Notes:

1. The internal ceiling height within residential properties may vary due to structural, architectural and/or decoration design variations.
2. Please refer to page 19 of this sales brochure for the terms and abbreviations in studying the floor plans.

因住宅物業的較高樓層的結構牆的厚度遞減，較高樓層的內部面積，一般比較低樓層的內部面積稍大。

備註：

1. 住宅物業之天花高度將會因應其結構、建築及/或裝修設計上的差異而有所不同。
2. 請參閱本售樓說明書第19頁之圖例以協助閱讀樓面平面圖之名稱和簡稱。

11 FLOOR PLANS OF RESIDENTIAL PROPERTIES IN THE DEVELOPMENT

發展項目的住宅物業的樓面平面圖

BLOCK B 18TH – 19TH FLOOR PLAN

B座 18樓至19樓樓面平面圖



Remarks:
The dimensions of floor plans are all in millimeters.

備註：
樓面平面圖所列之尺寸為以毫米標示。

Scale 比例 : 0 5 10M(米)

11 FLOOR PLANS OF RESIDENTIAL PROPERTIES IN THE DEVELOPMENT

發展項目的住宅物業的樓面平面圖

BLOCK B 18TH – 19TH FLOOR PLAN

B座 18樓至19樓樓面平面圖

	Block 座數	Floor 樓層	Flat 單位	
			1	2
The thickness of the floor slabs (excluding plaster) of each residential property (mm) 每個住宅物業的樓板(不包括灰泥)的厚度(毫米)	Block B B座	18/F - 19/F 18樓至19樓	100, 125, 150	100, 125, 150
The floor-to-floor height of each residential property (mm) 每個住宅物業的層與層之間的高度(毫米)			2800	2800

The internal areas of the residential properties on the upper floors will generally be slightly larger than those on the lower floors because of the reducing thickness of the structural walls on the upper floors.

Notes:

1. The internal ceiling height within residential properties may vary due to structural, architectural and/or decoration design variations.
2. Please refer to page 19 of this sales brochure for the terms and abbreviations in studying the floor plans.

因住宅物業的較高樓層的結構牆的厚度遞減，較高樓層的內部面積，一般比較低樓層的內部面積稍大。

備註：

1. 住宅物業之天花高度將會因應其結構、建築及/或裝修設計上的差異而有所不同。
2. 請參閱本售樓說明書第19頁之圖例以協助閱讀樓面平面圖之名稱和簡稱。

11 FLOOR PLANS OF RESIDENTIAL PROPERTIES IN THE DEVELOPMENT

發展項目的住宅物業的樓面平面圖

BLOCK B 20TH – 21ST FLOOR PLAN B座 20樓至21樓樓面平面圖



Remarks:
The dimensions of floor plans are all in millimeters.

備註：
樓面平面圖所列之尺寸為以毫米標示。

Scale 比例 : 0 5 10M(米)

11 FLOOR PLANS OF RESIDENTIAL PROPERTIES IN THE DEVELOPMENT

發展項目的住宅物業的樓面平面圖

BLOCK B 20TH – 21ST FLOOR PLAN B座 20樓至21樓樓面平面圖

	Block 座數	Floor 樓層	Flat 單位	
			1	2
The thickness of the floor slabs (excluding plaster) of each residential property (mm) 每個住宅物業的樓板(不包括灰泥)的厚度(毫米)	Block B B座	20/F - 21/F 20樓至21樓	100, 125, 150	100, 125, 150
The floor-to-floor height of each residential property (mm) 每個住宅物業的層與層之間的高度(毫米)			2800	2800

The internal areas of the residential properties on the upper floors will generally be slightly larger than those on the lower floors because of the reducing thickness of the structural walls on the upper floors.

Notes:

1. The internal ceiling height within residential properties may vary due to structural, architectural and/or decoration design variations.
2. Please refer to page 19 of this sales brochure for the terms and abbreviations in studying the floor plans.

因住宅物業的較高樓層的結構牆的厚度遞減，較高樓層的內部面積，一般比較低樓層的內部面積稍大。

備註：

1. 住宅物業之天花高度將會因應其結構、建築及/或裝修設計上的差異而有所不同。
2. 請參閱本售樓說明書第19頁之圖例以協助閱讀樓面平面圖之名稱和簡稱。

11 FLOOR PLANS OF RESIDENTIAL PROPERTIES IN THE DEVELOPMENT

發展項目的住宅物業的樓面平面圖

BLOCK B 22ND – 23RD FLOOR PLAN

B座 22樓至23樓樓面平面圖

	Block 座數	Floor 樓層	Flat 單位	
			1	2
The thickness of the floor slabs (excluding plaster) of each residential property (mm) 每個住宅物業的樓板(不包括灰泥)的厚度(毫米)	Block B B座	22/F - 23/F 22樓至23樓	100, 125, 150	100, 125, 150
The floor-to-floor height of each residential property (mm) 每個住宅物業的層與層之間的高度(毫米)			2800	2800

The internal areas of the residential properties on the upper floors will generally be slightly larger than those on the lower floors because of the reducing thickness of the structural walls on the upper floors.

Notes:

- The internal ceiling height within residential properties may vary due to structural, architectural and/or decoration design variations.
- Please refer to page 19 of this sales brochure for the terms and abbreviations in studying the floor plans.

因住宅物業的較高樓層的結構牆的厚度遞減，較高樓層的內部面積，一般比較低樓層的內部面積稍大。

備註：

- 住宅物業之天花高度將會因應其結構、建築及/或裝修設計上的差異而有所不同。
- 請參閱本售樓說明書第19頁之圖例以協助閱讀樓面平面圖之名稱和簡稱。

11 FLOOR PLANS OF RESIDENTIAL PROPERTIES IN THE DEVELOPMENT

發展項目的住宅物業的樓面平面圖

BLOCK B 24TH – 25TH FLOOR PLAN B座 24樓至25樓樓面平面圖



Remarks:
The dimensions of floor plans are all in millimeters.

備註：
樓面平面圖所列之尺寸為以毫米標示。

Scale 比例 : 0 5 10M(米)

11 FLOOR PLANS OF RESIDENTIAL PROPERTIES IN THE DEVELOPMENT

發展項目的住宅物業的樓面平面圖

BLOCK B 24TH – 25TH FLOOR PLAN B座 24樓至25樓樓面平面圖

	Block 座數	Floor 樓層	Flat 單位	
			1	2
The thickness of the floor slabs (excluding plaster) of each residential property (mm) 每個住宅物業的樓板(不包括灰泥)的厚度(毫米)	Block B B座	24/F - 25/F 24樓至25樓	100, 125, 150	100, 125, 150
The floor-to-floor height of each residential property (mm) 每個住宅物業的層與層之間的高度(毫米)			2800	2800

The internal areas of the residential properties on the upper floors will generally be slightly larger than those on the lower floors because of the reducing thickness of the structural walls on the upper floors.

Notes:

1. The internal ceiling height within residential properties may vary due to structural, architectural and/or decoration design variations.
2. Please refer to page 19 of this sales brochure for the terms and abbreviations in studying the floor plans.

因住宅物業的較高樓層的結構牆的厚度遞減，較高樓層的內部面積，一般比較低樓層的內部面積稍大。

備註：

1. 住宅物業之天花高度將會因應其結構、建築及/或裝修設計上的差異而有所不同。
2. 請參閱本售樓說明書第19頁之圖例以協助閱讀樓面平面圖之名稱和簡稱。

11 FLOOR PLANS OF RESIDENTIAL PROPERTIES IN THE DEVELOPMENT

發展項目的住宅物業的樓面平面圖

BLOCK B 26TH – 27TH FLOOR PLAN B座 26樓至27樓樓面平面圖



Remarks:
The dimensions of floor plans are all in millimeters.

備註：
樓面平面圖所列之尺寸為以毫米標示。

Scale 比例 : 0 5 10M(米)

11 FLOOR PLANS OF RESIDENTIAL PROPERTIES IN THE DEVELOPMENT

發展項目的住宅物業的樓面平面圖

BLOCK B 26TH – 27TH FLOOR PLAN B座 26樓至27樓樓面平面圖

	Block 座數	Floor 樓層	Flat 單位	
			1	2
The thickness of the floor slabs (excluding plaster) of each residential property (mm) 每個住宅物業的樓板(不包括灰泥)的厚度(毫米)	Block B B座	26/F - 27/F 26樓至27樓	100, 125, 150	100, 125, 150
The floor-to-floor height of each residential property (mm) 每個住宅物業的層與層之間的高度(毫米)			2800	2800

The internal areas of the residential properties on the upper floors will generally be slightly larger than those on the lower floors because of the reducing thickness of the structural walls on the upper floors.

Notes:

- The internal ceiling height within residential properties may vary due to structural, architectural and/or decoration design variations.
- Please refer to page 19 of this sales brochure for the terms and abbreviations in studying the floor plans.

因住宅物業的較高樓層的結構牆的厚度遞減，較高樓層的內部面積，一般比較低樓層的內部面積稍大。

備註：

- 住宅物業之天花高度將會因應其結構、建築及/或裝修設計上的差異而有所不同。
- 請參閱本售樓說明書第19頁之圖例以協助閱讀樓面平面圖之名稱和簡稱。

11 FLOOR PLANS OF RESIDENTIAL PROPERTIES IN THE DEVELOPMENT

發展項目的住宅物業的樓面平面圖

BLOCK B 28TH – 29TH FLOOR PLAN

B座 28樓至29樓樓面平面圖

	Block 座數	Floor 樓層	Flat 單位	
			1	2
The thickness of the floor slabs (excluding plaster) of each residential property (mm) 每個住宅物業的樓板(不包括灰泥)的厚度(毫米)	Block B B座	28/F - 29/F 28樓至29樓	100, 125, 150	100, 125, 150
The floor-to-floor height of each residential property (mm) 每個住宅物業的層與層之間的高度(毫米)			2800	2800

The internal areas of the residential properties on the upper floors will generally be slightly larger than those on the lower floors because of the reducing thickness of the structural walls on the upper floors.

Notes:

- The internal ceiling height within residential properties may vary due to structural, architectural and/or decoration design variations.
- Please refer to page 19 of this sales brochure for the terms and abbreviations in studying the floor plans.

因住宅物業的較高樓層的結構牆的厚度遞減，較高樓層的內部面積，一般比較低樓層的內部面積稍大。

備註：

- 住宅物業之天花高度將會因應其結構、建築及/或裝修設計上的差異而有所不同。
- 請參閱本售樓說明書第19頁之圖例以協助閱讀樓面平面圖之名稱和簡稱。

11 FLOOR PLANS OF RESIDENTIAL PROPERTIES IN THE DEVELOPMENT

發展項目的住宅物業的樓面平面圖

BLOCK B 30TH FLOOR PLAN B座 30樓樓面平面圖



Remarks:
The dimensions of floor plans are all in millimeters.

備註：
樓面平面圖所列之尺寸為以毫米標示。

Scale 比例 : 0 5 10M(米)

11 FLOOR PLANS OF RESIDENTIAL PROPERTIES IN THE DEVELOPMENT

發展項目的住宅物業的樓面平面圖

BLOCK B 30TH FLOOR PLAN B座 30樓樓面平面圖

	Block 座數	Floor 樓層	Flat 單位	
			1	2
The thickness of the floor slabs (excluding plaster) of each residential property (mm) 每個住宅物業的樓板(不包括灰泥)的厚度(毫米)	Block B B座	30/F 30樓	100, 125, 150	100, 125, 150
The floor-to-floor height of each residential property (mm) 每個住宅物業的層與層之間的高度(毫米)			2800	2800

The internal areas of the residential properties on the upper floors will generally be slightly larger than those on the lower floors because of the reducing thickness of the structural walls on the upper floors.

Notes:

1. The internal ceiling height within residential properties may vary due to structural, architectural and/or decoration design variations.
2. Please refer to page 19 of this sales brochure for the terms and abbreviations in studying the floor plans.

因住宅物業的較高樓層的結構牆的厚度遞減，較高樓層的內部面積，一般比較低樓層的內部面積稍大。

備註：

1. 住宅物業之天花高度將會因應其結構、建築及/或裝修設計上的差異而有所不同。
2. 請參閱本售樓說明書第19頁之圖例以協助閱讀樓面平面圖之名稱和簡稱。

12 AREA OF RESIDENTIAL PROPERTIES IN THE DEVELOPMENT

發展項目中的住宅物業的面積

Description of Residential Property 住宅物業的描述			Saleable Area (including balcony, utility platform and verandah (if any)) sq. metre (sq. ft) 實用面積 (包括露台、工作平台及陽台(如有)) 平方米(平方呎)	Area of other specified items (Not included in the Saleable Area) sq. metre (sq. ft) 其他指明項目的面積(不計算入實用面積)平方米(平方呎)									
Block 座數	Floor 樓層	Flat 單位		Air- Conditioning Plant Room 空調機房	Bay Window 窗台	Cockloft 閣樓	Flat Roof 平台	Garden 花園	Parking Space 停車位	Roof 天台	Stairhood 梯屋	Terrace 前庭	Yard 庭院
Block A A座	2/F - 30/F 2樓至30樓	1	126.603 (1363) Balcony 露台 : 4.293 (46) Utility Platform 工作平台 : - (-)	-	1.302 (14)	-	-	-	-	-	-	-	-
		2	127.043 (1367) Balcony 露台 : 4.293 (46) Utility Platform 工作平台 : - (-)	-	-	-	-	-	-	-	-	-	-
Block B B座	2/F - 30/F 2樓至30樓	1	126.443 (1361) Balcony 露台 : 4.293 (46) Utility Platform 工作平台 : - (-)	-	1.800 (19)	-	-	-	-	-	-	-	-
	1/F 1樓	1	126.443 (1361) Balcony 露台 : 4.293 (46) Utility Platform 工作平台 : - (-)	-	-	-	-	-	-	-	-	-	-
	1/F - 30/F 1樓至30樓	2	126.003 (1356) Balcony 露台 : 4.293 (46) Utility Platform 工作平台 : - (-)	-	1.800 (19)	-	-	-	-	-	-	-	-

1. The saleable area of each residential property and the floor areas of balcony, utility platform and verandah (if any) to the extent that it forms part of the residential property are calculated in accordance with section 8 of the Residential Properties (First-hand Sales) Ordinance.
2. The areas of other specified items (if any) to the extent that they form part of the residential property (not included in salesable area) are calculated in accordance with Part 2 of Schedule 2 of the Residential Properties (First-hand Sales) Ordinance.

Remarks:

1. The areas in square metre have been converted to square feet based on a conversion ratio 1 square metre = 10.764 square feet and rounded off to the nearest integer, and thus the figures may be slightly different.
2. There is no verandah & utility platform in the residential properties in the Development.

1. 每個住宅物業的實用面積以及構成住宅物業的一部份的範圍內的露台、工作平台及陽台(如有)之樓面面積，是按照《一手住宅物業銷售條例》第8條計算得出的。
2. 在構成住宅物業的一部份的範圍內的其他指明項目(如有)的面積(不計算入實用面積)，是按照《一手住宅物業銷售條例》附表2第2部計算得出的。

備註：

1. 上述以平方呎表述之面積由以平方米表述之面積以1平方米=10.764平方呎換算並四捨五入至整數平方呎之方法計算得出，以平方呎表述之面積可能有些微差異。
2. 發展項目住宅物業不設工作平台及陽台。

13 FLOOR PLANS OF PARKING SPACES IN THE DEVELOPMENT

發展項目中的停車位的樓面平面圖

CARPARK 1 FLOOR PLAN 1層停車場樓面平面圖

Remarks:

Please refer to page 77 of this Sales Brochure for the categories, numbers, dimensions and area of each parking space as shown and marked in the Carpark 1 Floor Plan below.

備註：

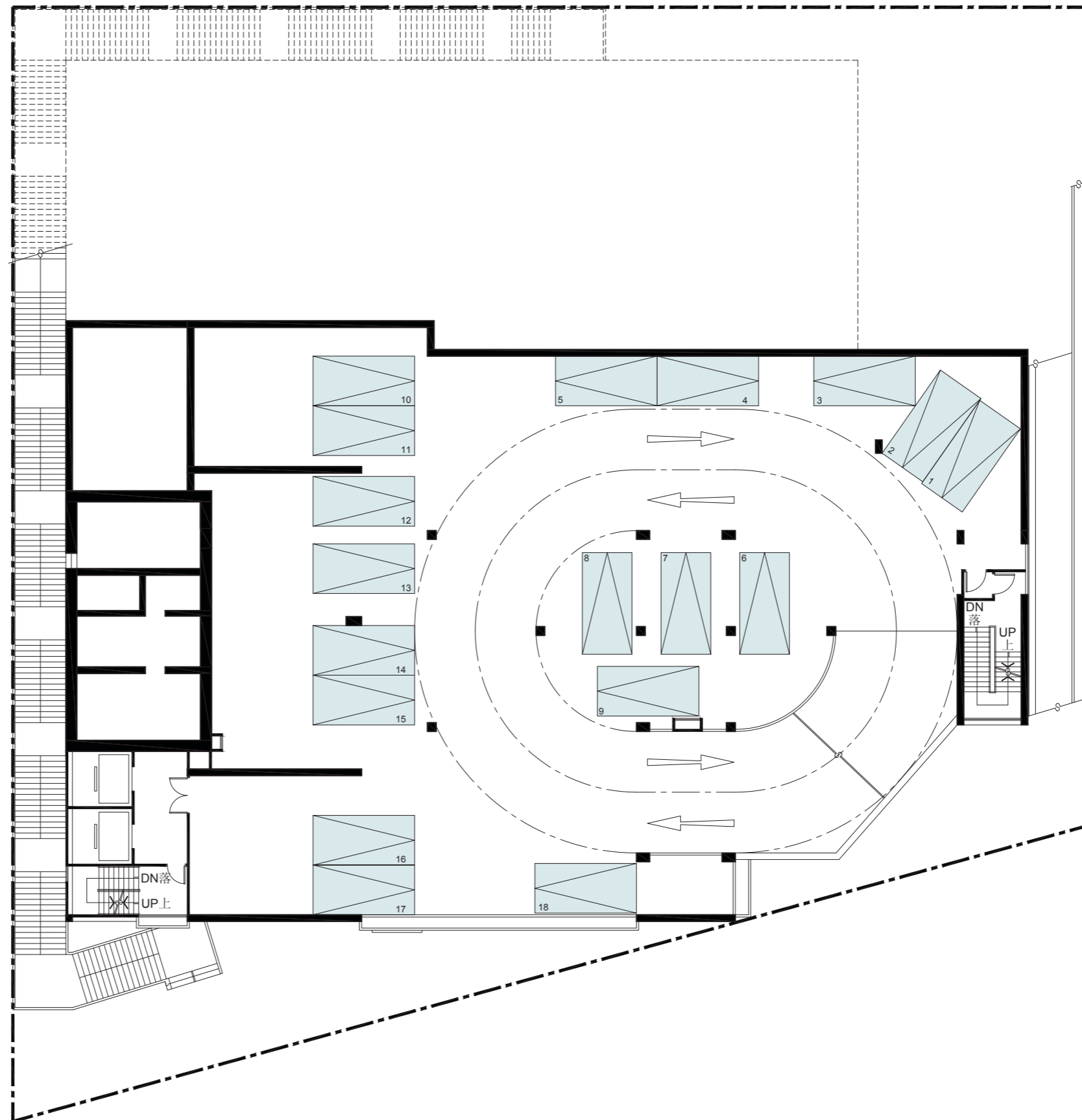
有關顯示及標記在以下1層停車場樓面平面圖的每個停車位的類別、數目、尺寸及面積，請參考本售樓說明書第77頁。

LEGEND 圖例：

 RESIDENTIAL PARKING SPACES
住宅停車位

 BOUNDARY LINE OF THE DEVELOPMENT
發展項目邊界線

Scale 比例： 0 5 10M(米)



13 FLOOR PLANS OF PARKING SPACES IN THE DEVELOPMENT

發展項目中的停車位的樓面平面圖

CARPARK 2 FLOOR PLAN 2層停車場樓面平面圖


Remarks:

Please refer to page 77 of this Sales Brochure for the categories, numbers, dimensions and area of each parking space as shown and marked in the Carpark 2 Floor Plan below.

備註：

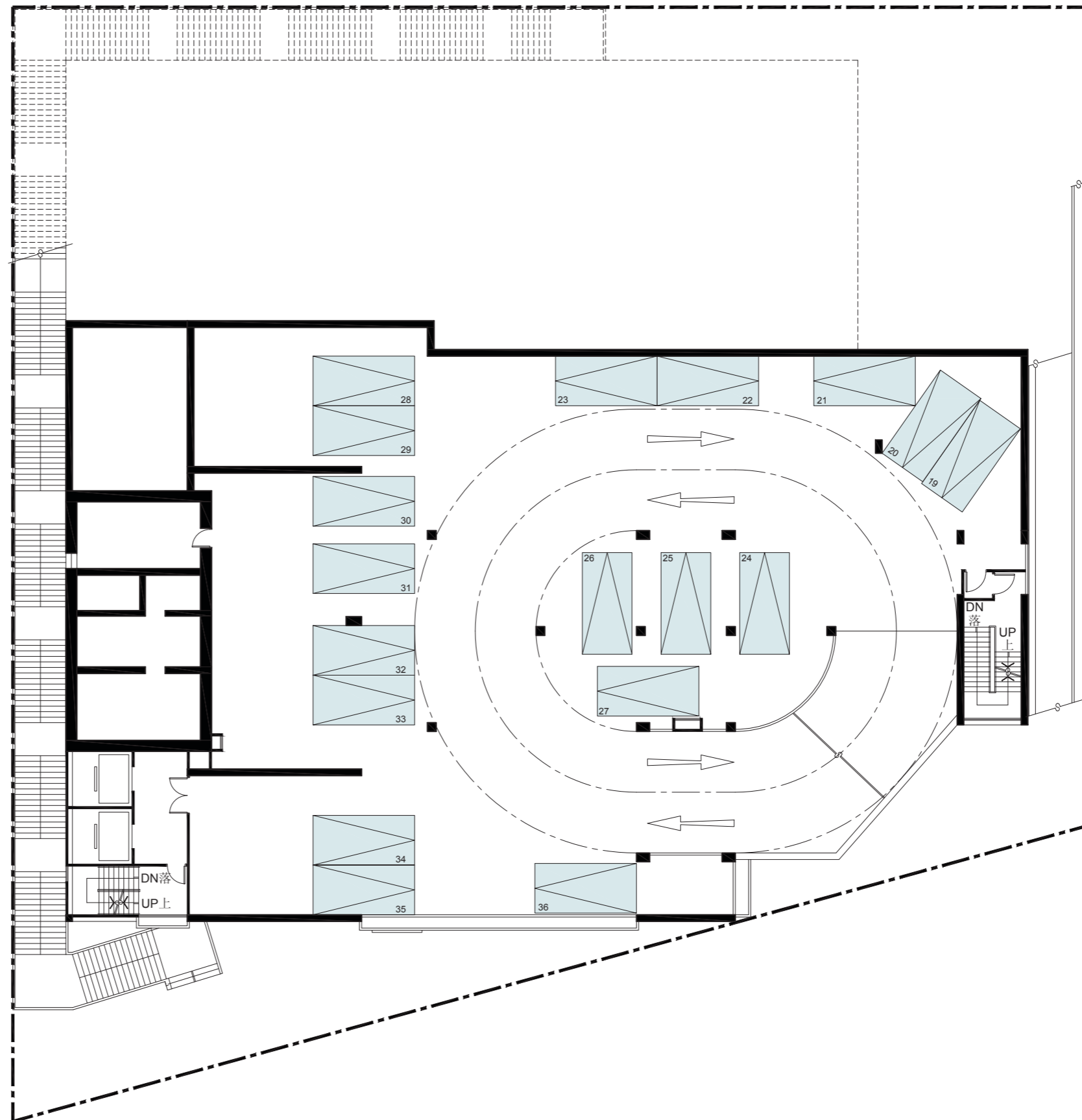
有關顯示及標記在以下2層停車場平面圖的每個停車位的類別、數目、尺寸及面積，請參考本售樓說明書第77頁。

LEGEND 圖例：

 RESIDENTIAL PARKING SPACES
住宅停車位

 BOUNDARY LINE OF THE DEVELOPMENT
發展項目邊界線

Scale 比例： 0 5 10M(米)



13 FLOOR PLANS OF PARKING SPACES IN THE DEVELOPMENT

發展項目中的停車位的樓面平面圖

CARPARK 3 FLOOR PLAN

3層停車場樓面平面圖


Remarks:

Please refer to page 77 of this Sales Brochure for the categories, numbers, dimensions and area of each parking space as shown and marked in the Carpark 3 Floor Plan below.


備註：

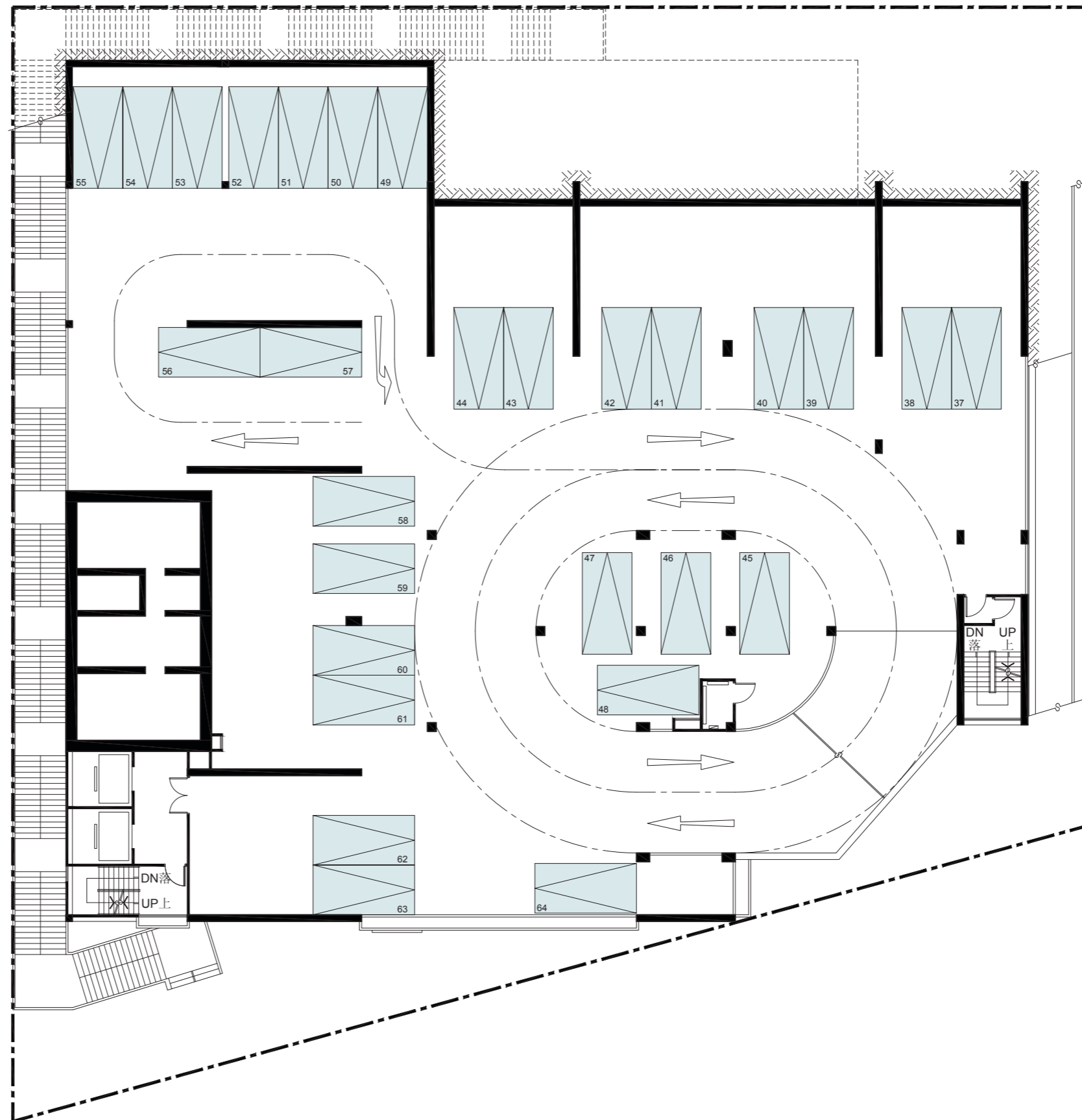
有關顯示及標記在以下3層停車場平面圖的每個停車位的類別、數目、尺寸及面積，請參考本售樓說明書第77頁。

LEGEND 圖例：

 RESIDENTIAL PARKING SPACES
住宅停車位

 BOUNDARY LINE OF THE DEVELOPMENT
發展項目邊界線

Scale 比例： 0 5 10M(米)



13 FLOOR PLANS OF PARKING SPACES IN THE DEVELOPMENT

發展項目中的停車位的樓面平面圖

CARPARK 4 FLOOR PLAN 4層停車場樓面平面圖


Remarks:

Please refer to page 77 of this Sales Brochure for the categories, numbers, dimensions and area of each parking space as shown and marked in the Carpark 4 Floor Plan below.

備註：

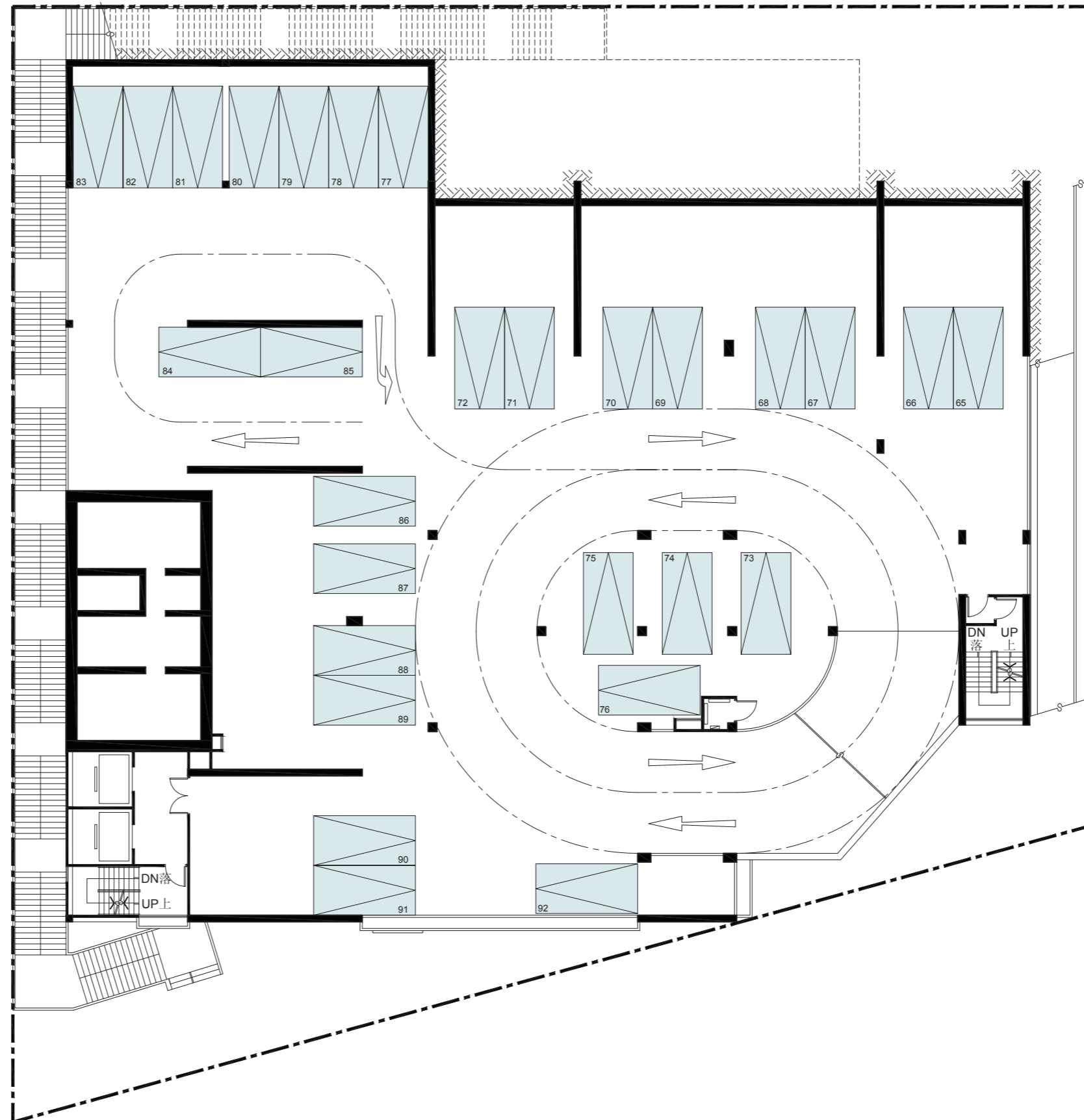
有關顯示及標記在以下4層停車場平面圖的每個停車位的類別、數目、尺寸及面積，請參考本售樓說明書第77頁。

LEGEND 圖例：

 RESIDENTIAL PARKING SPACES
住宅停車位

 BOUNDARY LINE OF THE DEVELOPMENT
發展項目邊界線

Scale 比例： 0 5 10M(米)



13 FLOOR PLANS OF PARKING SPACES IN THE DEVELOPMENT

發展項目中的停車位的樓面平面圖

CARPARK 5 FLOOR PLAN

5層停車場樓面平面圖


Remarks:

Please refer to page 77 of this Sales Brochure for the categories, numbers, dimensions and area of each parking space as shown and marked in the Carpark 5 Floor Plan below.

備註：

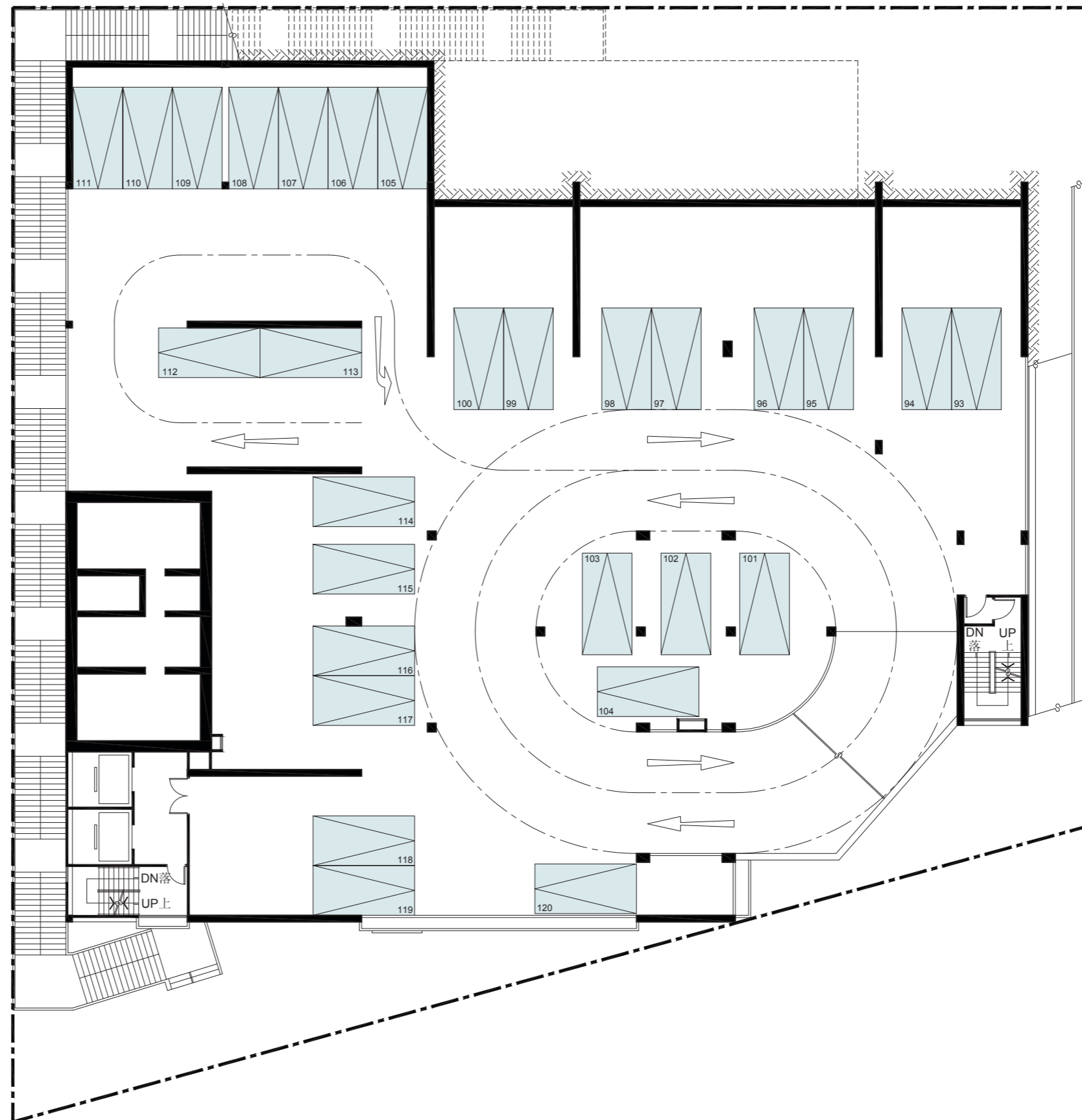
有關顯示及標記在以下5層停車場平面圖的每個停車位的類別、數目、尺寸及面積，請參考本售樓說明書第77頁。

LEGEND 圖例：

 RESIDENTIAL PARKING SPACES
住宅停車位

 BOUNDARY LINE OF THE DEVELOPMENT
發展項目邊界線

Scale 比例： 0 5 10M(米)



13 FLOOR PLANS OF PARKING SPACES IN THE DEVELOPMENT

發展項目中的停車位的樓面平面圖

CARPARK 6 FLOOR PLAN 6層停車場樓面平面圖


Remarks:

Please refer to page 77 of this Sales Brochure for the categories, numbers, dimensions and area of each parking space as shown and marked in the Carpark 6 Floor Plan below.


備註：

有關顯示及標記在以下6層停車場平面圖的每個停車位的類別、數目、尺寸及面積，請參考本售樓說明書第77頁。

LEGEND 圖例：

 RESIDENTIAL PARKING SPACES
住宅停車位

 BOUNDARY LINE OF THE DEVELOPMENT
發展項目邊界線

Scale 比例：  0 5 10M(米)



13 FLOOR PLANS OF PARKING SPACES IN THE DEVELOPMENT

發展項目中的停車位的樓面平面圖

Categories, Numbers, Dimensions and Area of Parking Space of the Development are as follows:

發展項目停車位的類別、數目、尺寸及車位面積如下：

Floor 樓層	Category of Parking Spaces 停車位類別	Parking Space Number 停車位編號	Number 數目	Dimensions of each Parking Space (Length x Width) (m) 每個停車位尺寸 (長 X 闊)(米)	Area of each Parking Space (sq. m) 每個停車位面積 (平方米)
Carpark 1 Floor 1層停車場	Residential Parking Spaces 住宅停車位	1 - 9, 12 - 18	18	4.600 x 2.250	10.350
		10 - 11		4.600 x 2.085	9.591
Carpark 2 Floor 2層停車場	Residential Parking Spaces 住宅停車位	19 - 27, 30 - 36	18	4.600 x 2.250	10.350
		28 - 29		4.600 x 2.170	9.982
Carpark 3 Floor 3層停車場	Residential Parking Spaces 住宅停車位	37 - 48, 50 - 64	28	4.600 x 2.250	10.350
		49		4.600 x 1.965	9.039
Carpark 4 Floor 4層停車場	Residential Parking Spaces 住宅停車位	65 - 76, 78 - 92	28	4.600 x 2.250	10.350
		77		4.600 x 1.970	9.062
Carpark 5 Floor 5層停車場	Residential Parking Spaces 住宅停車位	93 - 104, 106 - 110, 112 - 120	28	4.600 x 2.250	10.350
		105		4.600 x 2.105	9.683
		111		4.600 x 2.195	10.097
Carpark 6 Floor 6層停車場	Residential Parking Spaces 住宅停車位	121 - 132, 134 - 149	29	4.600 x 2.250	10.350
		133		4.600 x 2.070	9.522

14 SUMMARY OF PRELIMINARY AGREEMENT FOR SALE AND PURCHASE

臨時買賣合約的摘要

1. A preliminary deposit of 5% is payable on the signing of the preliminary agreement for sale and purchase (“Preliminary Agreement”).
 2. The preliminary deposit paid by the purchaser on the signing of the Preliminary Agreement will be held by a firm of solicitors acting for the owner, as stakeholders.
 3. If the purchaser fails to execute the agreement for sale and purchase within 5 working days after the date on which the purchaser enters into the Preliminary Agreement:
 - (i) the Preliminary Agreement is terminated;
 - (ii) the preliminary deposit is forfeited; and
 - (iii) the owner does not have any further claim against the purchaser for the failure.
1. 在簽署臨時買賣合約(「該臨時合約」)時須支付款額為5%的臨時訂金。
 2. 買方在簽署該臨時合約時支付的臨時訂金，會由代表擁有人行事的律師事務所以保證金保存人的身分持有。
 3. 如買方沒有於訂立該臨時合約的日期之後5個工作日內簽立買賣合約：
 - (i) 該臨時合約即告終止；
 - (ii) 有關的臨時訂金即予沒收；及
 - (iii) 擁有人不得就買方沒有簽立買賣合約，而針對買方提出進一步申索。