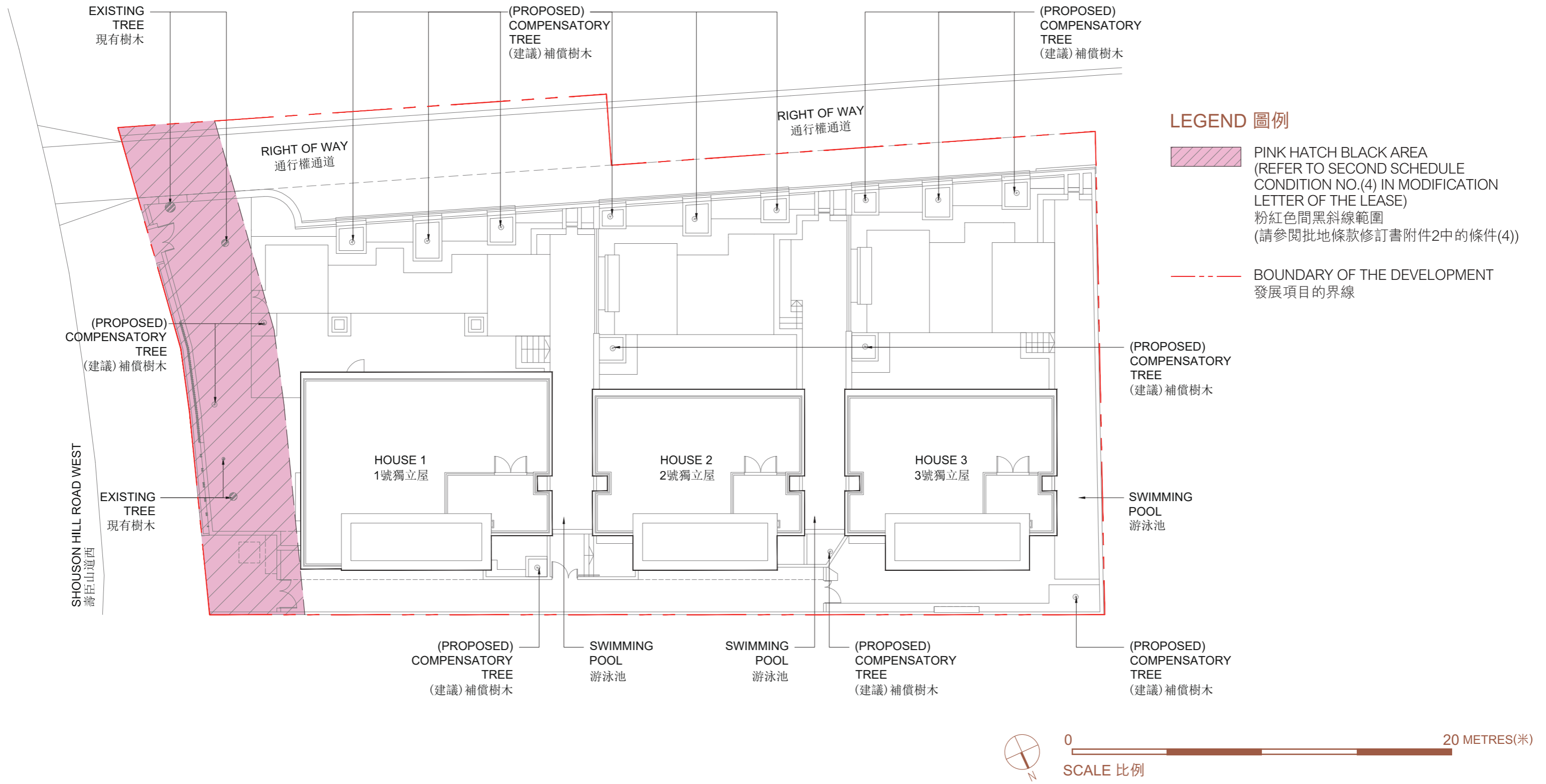


# LAYOUT PLAN OF THE DEVELOPMENT

## 發展項目的布局圖



# FLOOR PLANS OF RESIDENTIAL PROPERTIES IN THE DEVELOPMENT

## 發展項目的住宅物業的樓面平面圖

### LEGEND FOR FLOOR PLAN 平面圖圖例

A.F. = Architectural Feature = 建築裝飾

A.F. ABOVE = Architectural Feature Above = 上層建築裝飾

A/C AREA = Air-conditioner Area = 空調機空間

BATH 1 = Bathroom 1 = 浴室1

BATH 2 = Bathroom 2 = 浴室2

BATH 3 = Bathroom 3 = 浴室3

BEDROOM 1 = Bedroom 1 = 睡房1

BEDROOM 2 = Bedroom 2 = 睡房2

BEDROOM 3 = Bedroom 3 = 睡房3

BUILDING LINE ABOVE = Building Line Above = 上層建築物邊線

COMMON ELECTRICAL METER ROOM = Common Electrical Meter Room = 公共電錶房

CP1 = Car Parking Space 1 = 停車位1

CP2 = Car Parking Space 2 = 停車位2

DN = Down = 落

E.M.R. = Electrical Meter Room = 電錶房

EXISTING TREE = Existing Tree = 現有樹木

F.S. CONTROL ROOM = Fire Service Control Room = 消防控制室

F.S. PUMP ROOM = Fire Service Pump Room = 消防水泵房

F.S. WATER C.M.C. = Fire Service Water Check Meter Cabinet = 消防水檢測錶櫃

F.S. WATER TANK = Fire Service Water Tank = 消防水箱

FAMILY ROOM = Family Room = 家庭房

FEATURE ABOVE = Feature Above = 上層裝飾

GAS INLET = Gas Inlet = 煤氣接駁點

G.M.C. = Gas Meter Cabinet = 煤氣錶櫃

G.M.C. at H/L = Gas Meter Cabinet at High Level = 於高位的煤氣錶櫃

GARDEN = Garden = 花園

H.R. = Hose Reel = 消防喉轆

H.R. AT H/L = Hose Reel at High Level = 於高位的消防喉轆

HOUSE 1 = House 1 = 1號獨立屋

HOUSE 2 = House 2 = 2號獨立屋

HOUSE 3 = House 3 = 3號獨立屋

KIT. = Kitchen = 廚房

LAV. = Lavatory = 廁所

LIFT = Lift = 電梯

LIFT LOBBY = Lift Lobby = 電梯大堂

LIV. / DIN. = Living Room and Dining Room = 客廳及飯廳

LOUVER = Louver = 百葉

LOUVER AT H/L = Louver at High Level = 於高位的百葉

MASTER BATH = Master Bathroom = 主人浴室

MASTER BEDROOM = Master Bedroom = 主人睡房

MASTER WATER METER ROOM = Master Water Meter Room = 總水錶房

OPEN KIT. AREA = Open Kitchen Area = 開放式廚房空間

P. = Planter = 花槽

POTABLE & FLUSHING TANK & PUMP ROOM = Potable and Flushing Tank and Pump Room = 食水及沖廁水箱及泵房

(PROPOSED) COMPENSATORY TREE = (Proposed) Compensatory Tree = (建議) 補償樹木

RAMP DOWN = Ramp Down = 向下斜道

RAMP UP = Ramp Up = 向上斜道

ROOF = Roof = 天台

R.S.M.R.C. = Refuse Storage and Material Recovery Chamber = 垃圾儲存及物料回收房

SPRINKLER INLET = Sprinkler Inlet = 灑水器入水口

SPRINKLER PUMP ROOM = Sprinkler Pump Room = 灑水器水泵房

SPRINKLER TANK = Sprinkler Tank = 灑水器水箱

SPRINKLER VALVE = Sprinkler Valve = 灑水器閥門

SRPINKLER WATER C.M.C. = Sprinkler Water Check Meter Cabinet = 灑水器水檢測錶櫃

SWIMMING POOL = Swimming Pool = 游泳池

TOP ROOF = Top Roof = 頂層天台

TOP OF A.F. = Top of Architectural Feature = 建築裝飾頂部

UP = Up = 上

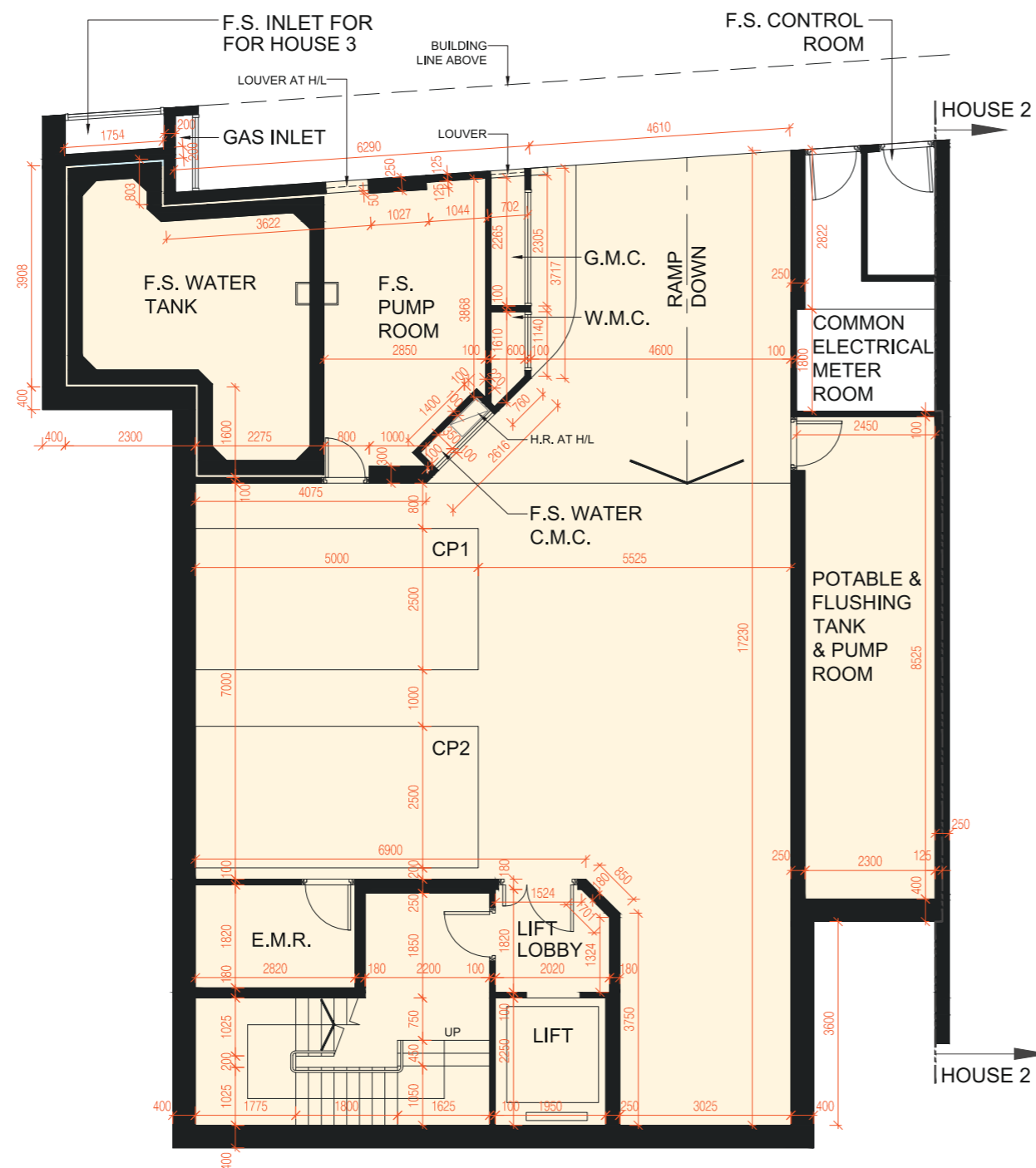
W.M.C. = Water Meter Cabinet = 水錶櫃

W.M.C. AT L/L = Water Meter Cabinet at Low Level = 於低位的水錶櫃

WALK-IN CLOSET = Walk-in Closet = 衣帽間

# FLOOR PLANS OF RESIDENTIAL PROPERTIES IN THE DEVELOPMENT

## 發展項目的住宅物業的樓面平面圖



### HOUSE 1 1號獨立屋

Floor-to-floor height of LG/F (mm): 3440/4300/4400/4450/4500/4650

Thickness of the floor slabs excluding plaster of LG/F (mm): 175/200

Floor-to-floor height refers to the height between the top surface of the structural slab of a floor and the top surface of the structural slab of its immediate upper floor

低層地下 - 層與層之間的高度(毫米) : 3440/4300/4400/4450/4500/4650

低層地下 - 樓板(不包括灰泥)的厚度 (毫米) : 175/200

層與層之間的高度指該樓層之石屎地台面與上一層石屎地台面之高度距離

The internal areas of the residential properties on the upper floors will generally be slightly larger than those on the lower floors because of the reducing thickness of the structural walls on the upper floors.

因住宅物業的較高樓層的結構牆的厚度遞減，較高樓層的內部面積，一般比較低樓層的內部面積稍大。



0 10 METRES(米)

SCALE 比例

Notes :

1. The dimensions in floor plans are all structural dimensions in millimeter.
2. Please refer to page 20 of this sales brochure for the legends of the terms and abbreviations for the floor plans of residential properties.

備註 :

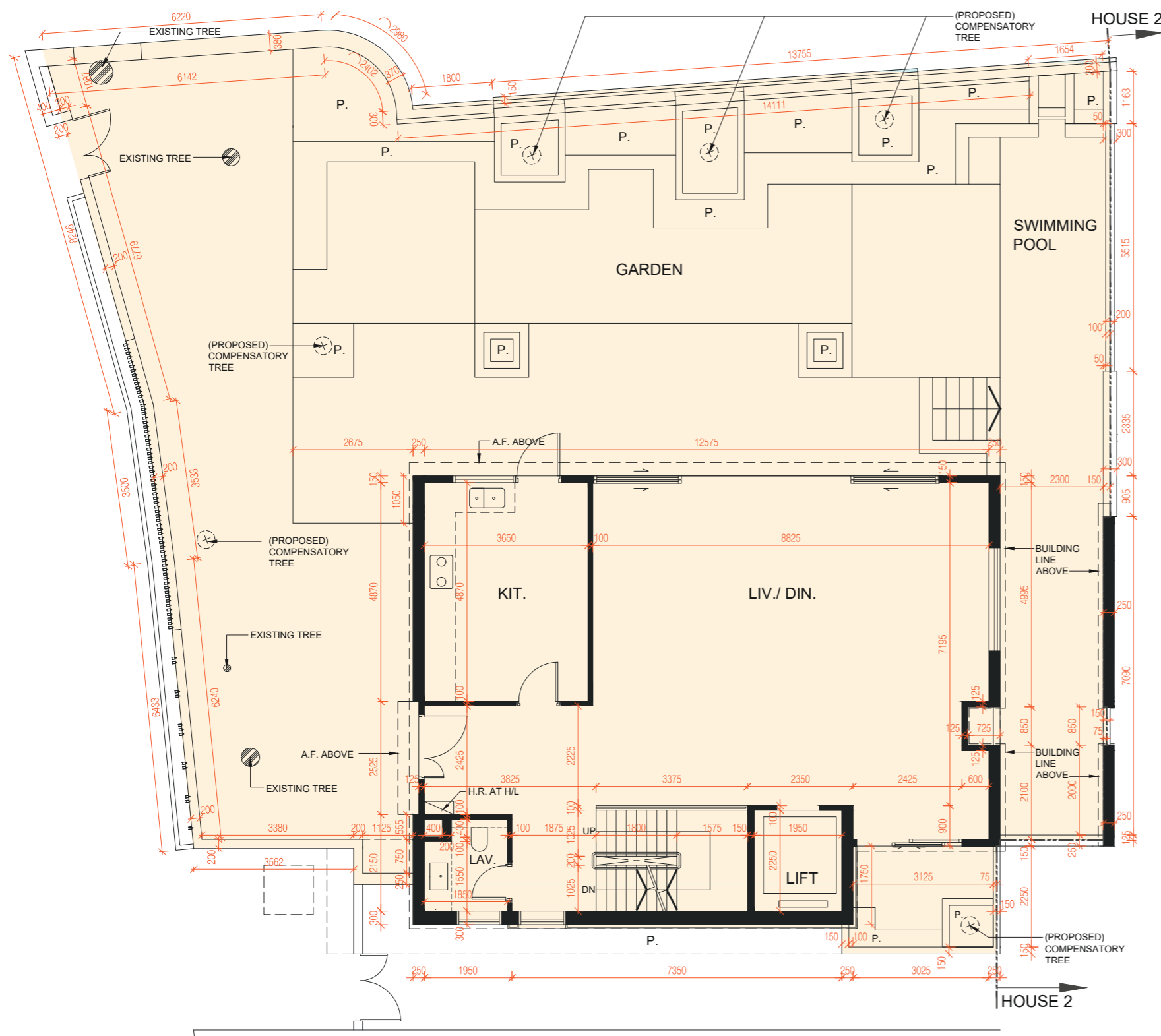
1. 平面圖所列的數字為以毫米標示之建築結構尺寸。
2. 請參閱本售樓說明書第20頁為住宅物業樓面平面圖而設之名詞及簡稱的圖例。

### LOWER GROUND FLOOR PLAN

#### 低層地下平面圖

# FLOOR PLANS OF RESIDENTIAL PROPERTIES IN THE DEVELOPMENT

## 發展項目的住宅物業的樓面平面圖



### HOUSE 1 1號獨立屋

Floor-to-floor height of G/F (mm): 4500

Thickness of the floor slabs excluding plaster of G/F (mm): 150/175/250

Floor-to-floor height refers to the height between the top surface of the structural slab of a floor and the top surface of the structural slab of its immediate upper floor

地下 - 層與層之間的高度 (毫米) : 4500

地下 - 樓板(不包括灰泥)的厚度 (毫米) : 150/175/250

層與層之間的高度指該樓層之石屎地台面與上一層石屎地台面之高度距離

The internal areas of the residential properties on the upper floors will generally be slightly larger than those on the lower floors because of the reducing thickness of the structural walls on the upper floors.

因住宅物業的較高樓層的結構牆的厚度遞減，較高樓層的內部面積，一般比較低樓層的內部面積稍大。



0 10 METRES(米)

SCALE 比例

Notes :

1. The dimensions in floor plans are all structural dimensions in millimeter.
2. Please refer to page 20 of this sales brochure for the legends of the terms and abbreviations for the floor plans of residential properties.

備註：

1. 平面圖所列的數字為以毫米標示之建築結構尺寸。
2. 請參閱本售樓說明書第20頁為住宅物業樓面平面圖而設之名稱及簡稱的圖例。

### GROUND FLOOR PLAN 地下平面圖

# FLOOR PLANS OF RESIDENTIAL PROPERTIES IN THE DEVELOPMENT

## 發展項目的住宅物業的樓面平面圖

### HOUSE 1 1號獨立屋

Floor-to-floor height of 1/F (mm): 3500

Floor-to-floor height of 2/F (mm): 3500

Thickness of the floor slabs excluding plaster of 1/F & 2/F (mm): 150/175/250

Floor-to-floor height refers to the height between the top surface of the structural slab of a floor and the top surface of the structural slab of its immediate upper floor

1樓 — 層與層之間的高度 (毫米) : 3500

2樓 — 層與層之間的高度 (毫米) : 3500

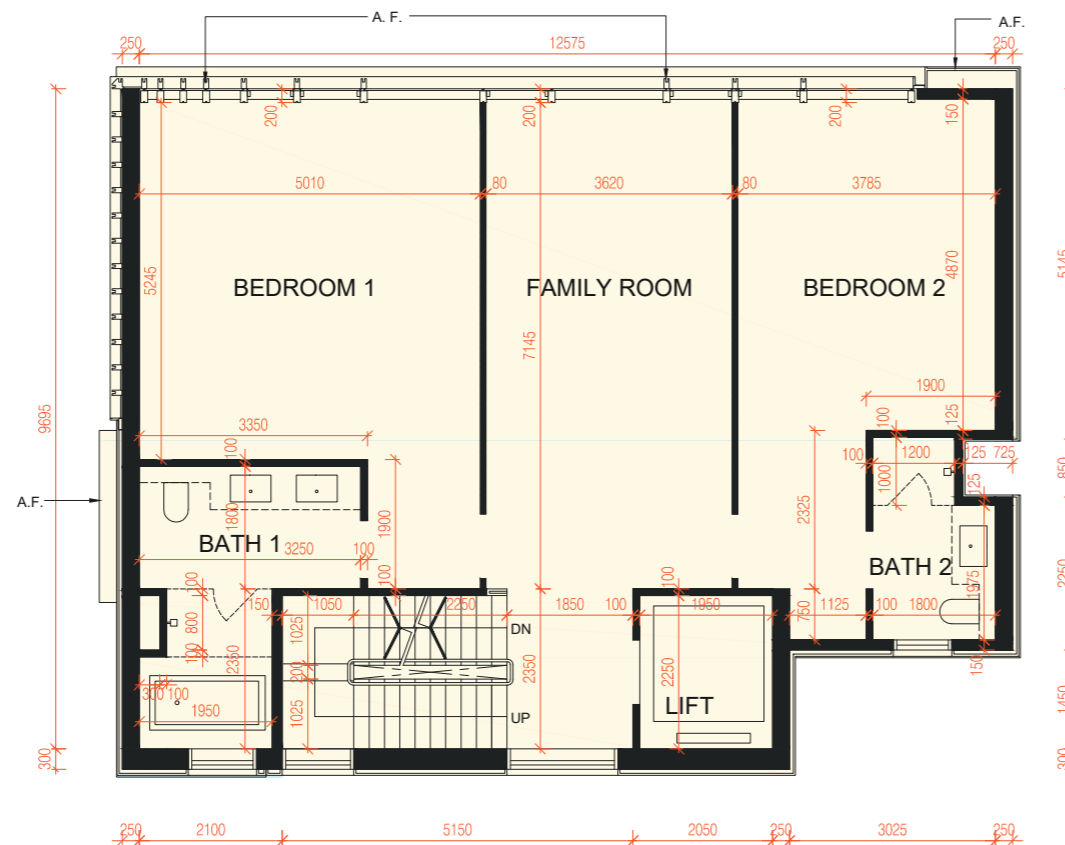
1樓及2樓 — 樓板(不包括灰泥)的厚度 (毫米) : 150/175/250

層與層之間的高度指該樓層之石屎地台面與上一層石屎地台面之高度距離

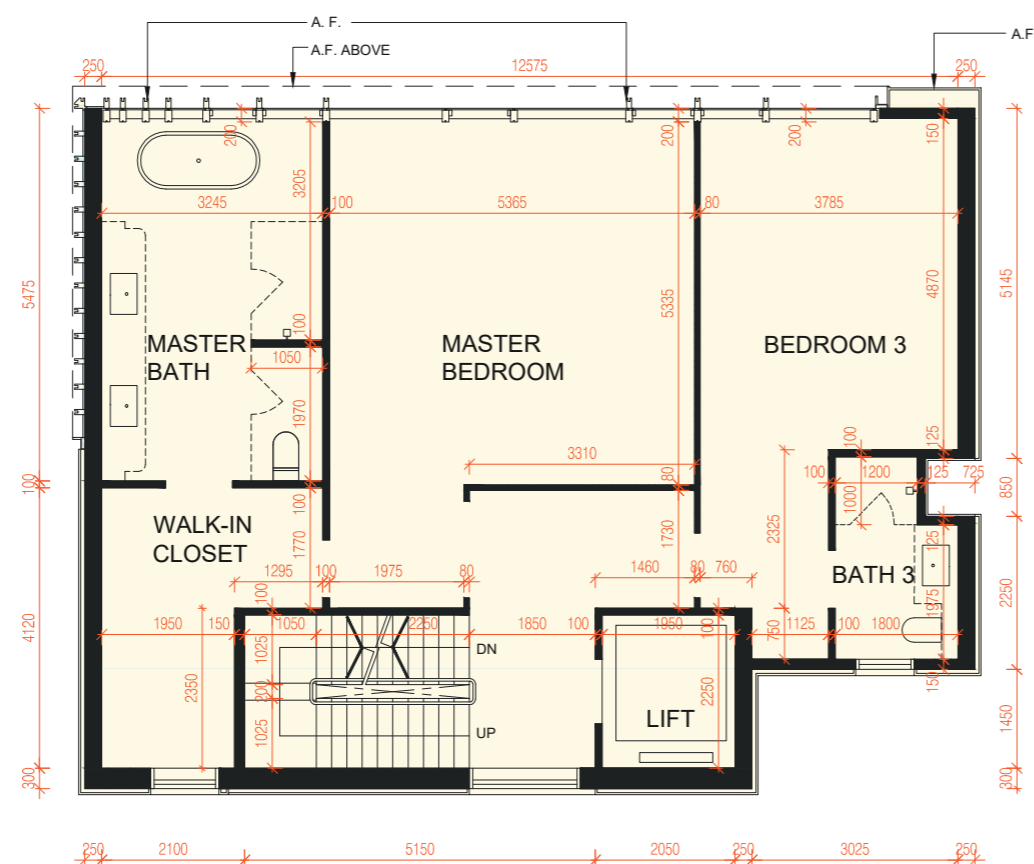
The internal areas of the residential properties on the upper floors will generally be slightly larger than those on the lower floors because of the reducing thickness of the structural walls on the upper floors.

因住宅物業的較高樓層的結構牆的厚度遞減，較高樓層的內部面積，一般比較低樓層的內部面積稍大。

### FIRST FLOOR PLAN 1樓平面圖



### SECOND FLOOR PLAN 2樓平面圖



0 10 METRES(米)

SCALE 比例

Notes :

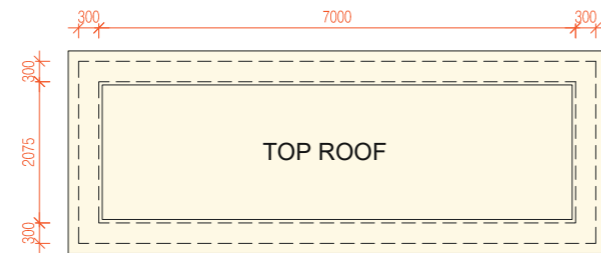
- The dimensions in floor plans are all structural dimensions in millimeter.
- Please refer to page 20 of this sales brochure for the legends of the terms and abbreviations for the floor plans of residential properties.

備註 :

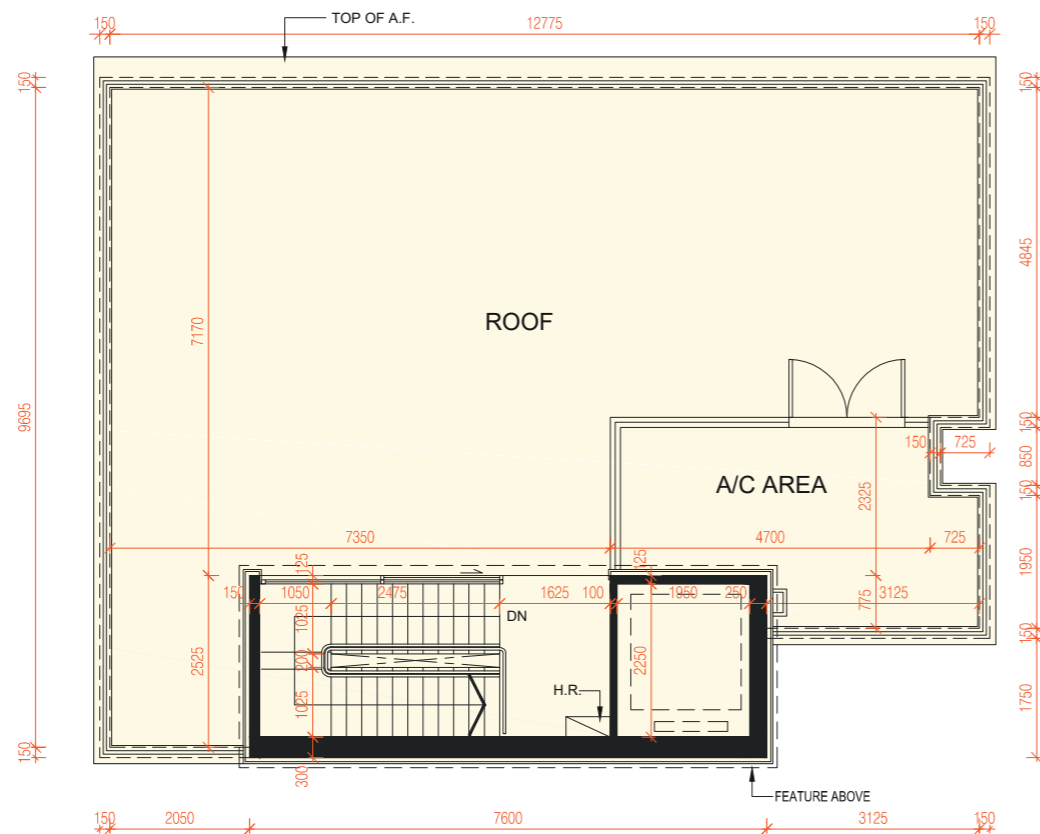
- 平面圖所列的數字為以毫米標示之建築結構尺寸。
- 請參閱本售樓說明書第20頁為住宅物業樓面平面圖而設之名詞及簡稱的圖例。

# FLOOR PLANS OF RESIDENTIAL PROPERTIES IN THE DEVELOPMENT

## 發展項目的住宅物業的樓面平面圖



TOP ROOF FLOOR PLAN  
頂層天台平面圖



ROOF FLOOR PLAN  
天台平面圖

## HOUSE 1 1號獨立屋

Floor-to-floor height of Roof (Stairhood) (mm): 2550

Thickness of the floor slabs excluding plaster of Roof (Stairhood) (mm): 150

Floor-to-floor height refers to the height between the top surface of the structural slab of a floor and the top surface of the structural slab of its immediate upper floor

天台(梯屋) — 層與層之間的高度 (毫米) : 2550

天台(梯屋) — 樓板(不包括灰泥)的厚度 (毫米) : 150

層與層之間的高度指該樓層之石屎地台面與上一層石屎地台面之高度距離

The internal areas of the residential properties on the upper floors will generally be slightly larger than those on the lower floors because of the reducing thickness of the structural walls on the upper floors.

因住宅物業的較高樓層的結構牆的厚度遞減，較高樓層的內部面積，一般比較低樓層的內部面積稍大。



0 10 METRES(米)

SCALE 比例

Notes :

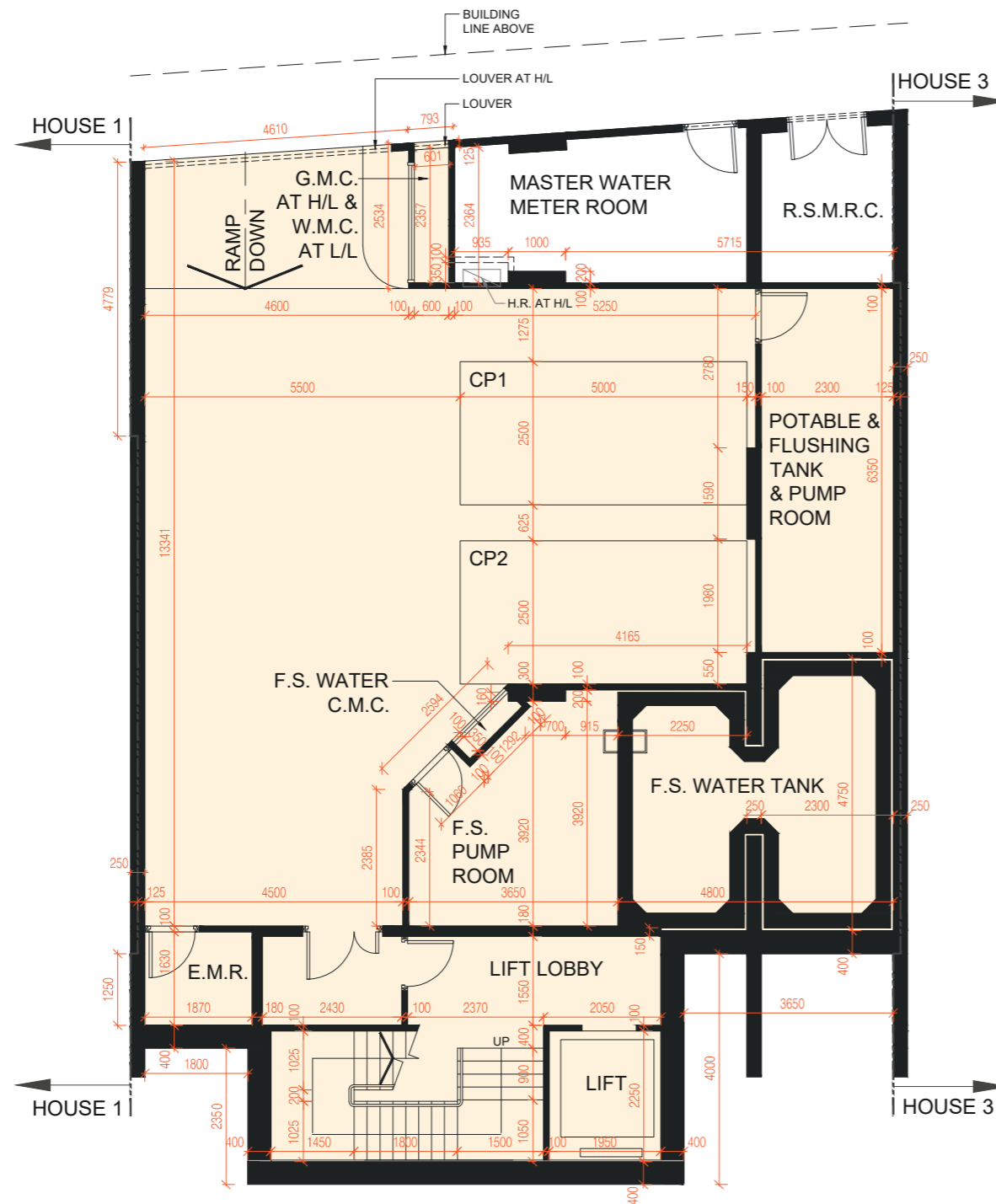
1. The dimensions in floor plans are all structural dimensions in millimeter.
2. Please refer to page 20 of this sales brochure for the legends of the terms and abbreviations for the floor plans of residential properties.

備註 :

1. 平面圖所列的數字為以毫米標示之建築結構尺寸。
2. 請參閱本售樓說明書第20頁為住宅物業樓面平面圖而設之名詞及簡稱的圖例。

# FLOOR PLANS OF RESIDENTIAL PROPERTIES IN THE DEVELOPMENT

## 發展項目的住宅物業的樓面平面圖



## HOUSE 2 2號獨立屋

Floor-to-floor height of LG/F (mm): 3500/4400/4700/4737/4950

Thickness of the floor slabs excluding plaster of LG/F (mm): 175/250

Floor-to-floor height refers to the height between the top surface of the structural slab of a floor and the top surface of the structural slab of its immediate upper floor

低層地下 — 層與層之間的高度 (毫米) : 3500/4400/4700/4737/4950

低層地下 — 樓板(不包括灰泥)的厚度 (毫米) : 175/250

層與層之間的高度指該樓層之石屎地台面與上一層石屎地台面之高度距離

The internal areas of the residential properties on the upper floors will generally be slightly larger than those on the lower floors because of the reducing thickness of the structural walls on the upper floors.

因住宅物業的較高樓層的結構牆的厚度遞減，較高樓層的內部面積，一般比較低樓層的內部面積稍大。



0 10 METRES(米)

SCALE 比例

Notes :

1. The dimensions in floor plans are all structural dimensions in millimeter.
2. Please refer to page 20 of this sales brochure for the legends of the terms and abbreviations for the floor plans of residential properties.

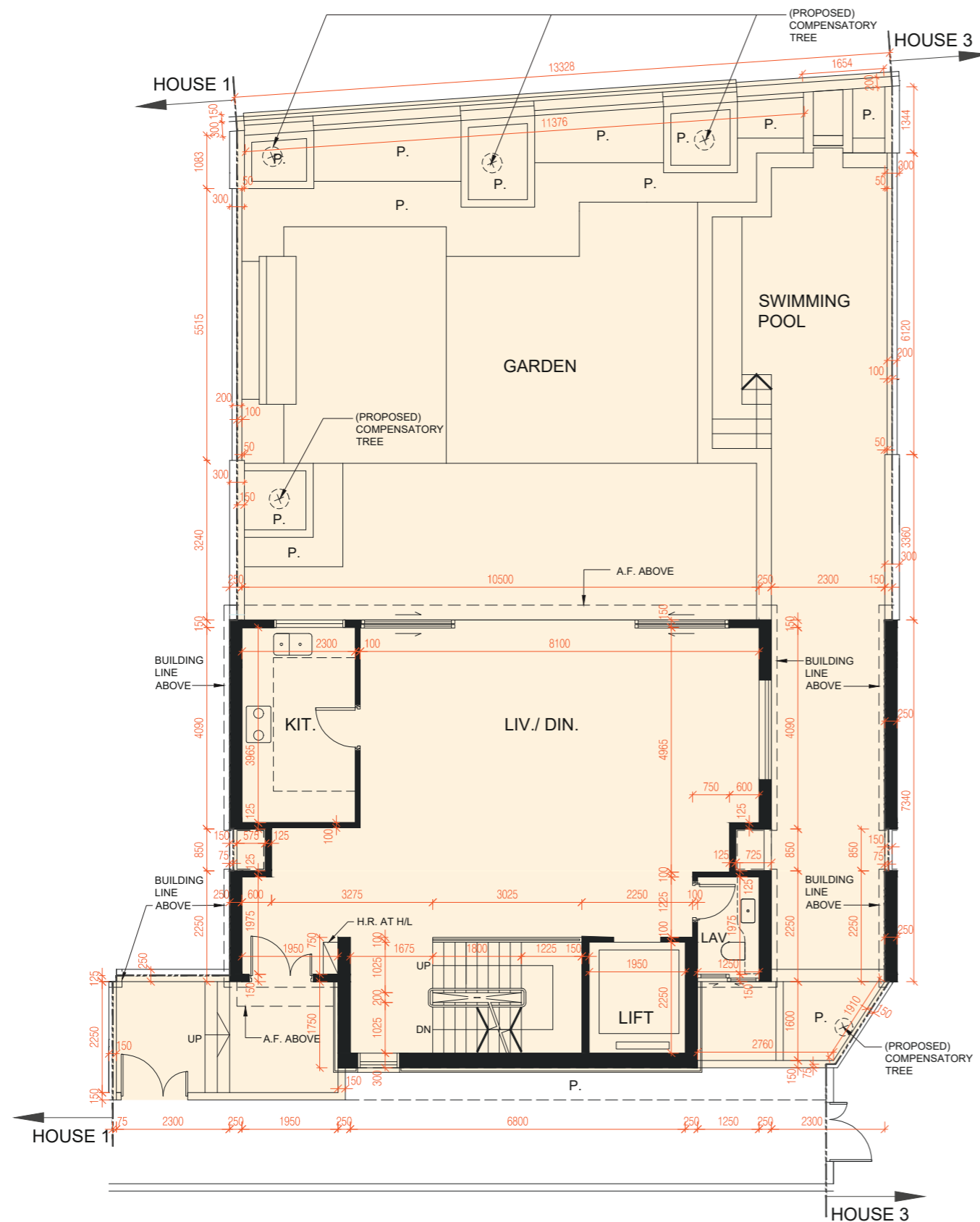
備註 :

1. 平面圖所列的數字為以毫米標示之建築結構尺寸。
2. 請參閱本售樓說明書第20頁為住宅物業樓面平面圖而設之名詞及簡稱的圖例。

## LOWER GROUND FLOOR PLAN 低層地下平面圖

# FLOOR PLANS OF RESIDENTIAL PROPERTIES IN THE DEVELOPMENT

## 發展項目的住宅物業的樓面平面圖



## HOUSE 2 2號獨立屋

Floor-to-floor height of G/F (mm): 4500

Thickness of the floor slabs excluding plaster of G/F (mm): 175/200

Floor-to-floor height refers to the height between the top surface of the structural slab of a floor and the top surface of the structural slab of its immediate upper floor

地下 - 層與層之間的高度 (毫米) : 4500

地下 - 樓板(不包括灰泥)的厚度 (毫米) : 175/200

層與層之間的高度指該樓層之石屎地台面與上一層石屎地台面之高度距離

The internal areas of the residential properties on the upper floors will generally be slightly larger than those on the lower floors because of the reducing thickness of the structural walls on the upper floors.

因住宅物業的較高樓層的結構牆的厚度遞減，較高樓層的內部面積，一般比較低樓層的內部面積稍大。



0 10 METRES(米)

SCALE 比例

Notes :

1. The dimensions in floor plans are all structural dimensions in millimeter.
2. Please refer to page 20 of this sales brochure for the legends of the terms and abbreviations for the floor plans of residential properties.

備註 :

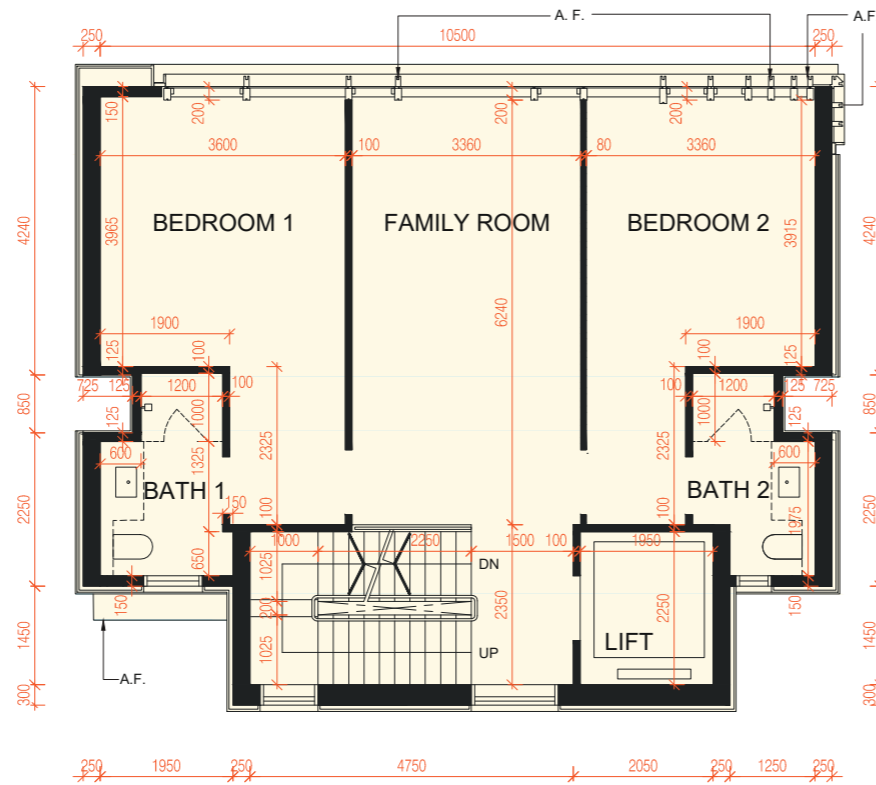
1. 平面圖所列的數字為以毫米標示之建築結構尺寸。
2. 請參閱本售樓說明書第20頁為住宅物業樓面平面圖而設之名詞及簡稱的圖例。

GROUND FLOOR PLAN  
地下平面圖

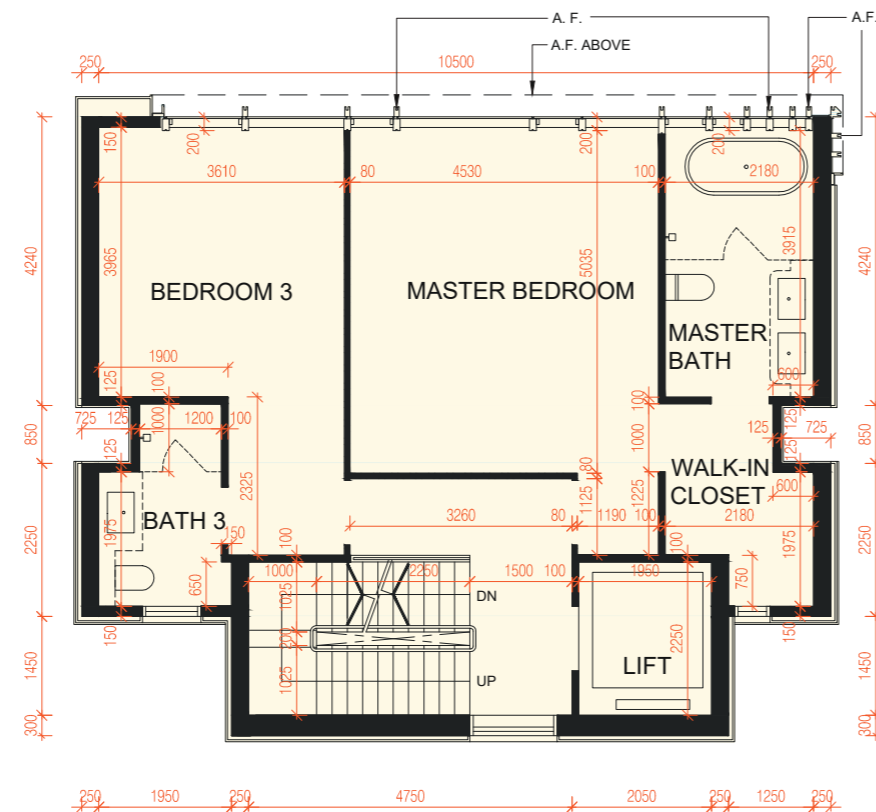


# FLOOR PLANS OF RESIDENTIAL PROPERTIES IN THE DEVELOPMENT

## 發展項目的住宅物業的樓面平面圖



FIRST FLOOR PLAN  
1樓平面圖



SECOND FLOOR PLAN  
2樓平面圖

## HOUSE 2 2號獨立屋

Floor-to-floor height of 1/F (mm): 3500

Floor-to-floor height of 2/F (mm): 3500

Thickness of the floor slabs excluding plaster of 1/F (mm): 175/200

Thickness of the floor slabs excluding plaster of 2/F (mm): 175/250

Floor-to-floor height refers to the height between the top surface of the structural slab of a floor and the top surface of the structural slab of its immediate upper floor

1樓 — 層與層之間的高度 (毫米) : 3500

2樓 — 層與層之間的高度 (毫米) : 3500

1樓 — 樓板(不包括灰泥)的厚度 (毫米) : 175/200

2樓 — 樓板(不包括灰泥)的厚度 (毫米) : 175/250

層與層之間的高度指該樓層之石屎地台面與上一層石屎地台面之高度距離

The internal areas of the residential properties on the upper floors will generally be slightly larger than those on the lower floors because of the reducing thickness of the structural walls on the upper floors.

因住宅物業的較高樓層的結構牆的厚度遞減，較高樓層的內部面積，一般比較低樓層的內部面積稍大。



0 10 METRES(米)

SCALE 比例

Notes :

1. The dimensions in floor plans are all structural dimensions in millimeter.
2. Please refer to page 20 of this sales brochure for the legends of the terms and abbreviations for the floor plans of residential properties.

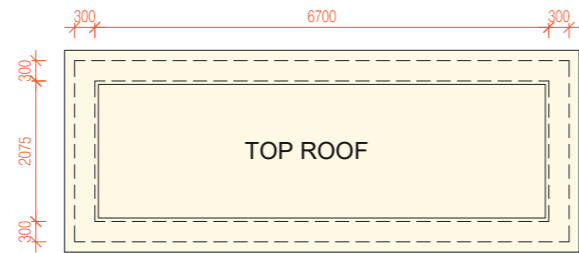
備註 :

1. 平面圖所列的數字為以毫米標示之建築結構尺寸。
2. 請參閱本售樓說明書第20頁為住宅物業樓面平面圖而設之名詞及簡稱的圖例。

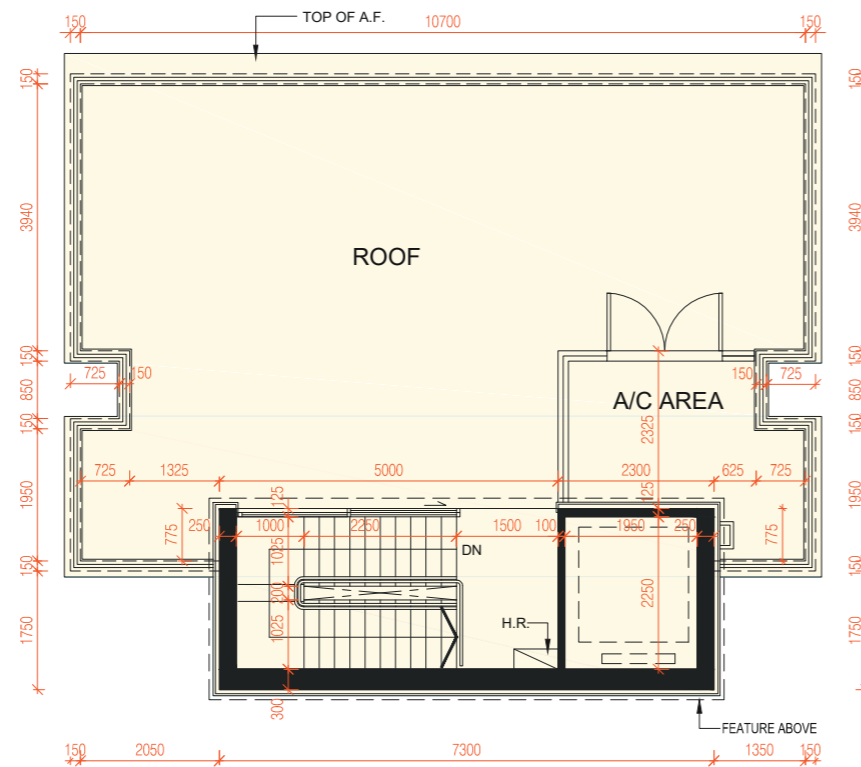
# FLOOR PLANS OF RESIDENTIAL PROPERTIES IN THE DEVELOPMENT

## 發展項目的住宅物業的樓面平面圖

### HOUSE 2 2號獨立屋



TOP ROOF FLOOR PLAN  
頂層天台平面圖



ROOF FLOOR PLAN  
天台平面圖

Floor-to-floor height of Roof (Stairhood) (mm): 2550

Thickness of the floor slabs excluding plaster of Roof (Stairhood) (mm): 150

Floor-to-floor height refers to the height between the top surface of the structural slab of a floor and the top surface of the structural slab of its immediate upper floor

天台(梯屋) — 層與層之間的高度 (毫米) : 2550

天台(梯屋) — 樓板(不包括灰泥)的厚度 (毫米) : 150

層與層之間的高度指該樓層之石屎地台面與上一層石屎地台面之高度距離

The internal areas of the residential properties on the upper floors will generally be slightly larger than those on the lower floors because of the reducing thickness of the structural walls on the upper floors.

因住宅物業的較高樓層的結構牆的厚度遞減，較高樓層的內部面積，一般比較低樓層的內部面積稍大。



0 10 METRES(米)

SCALE 比例

Notes :

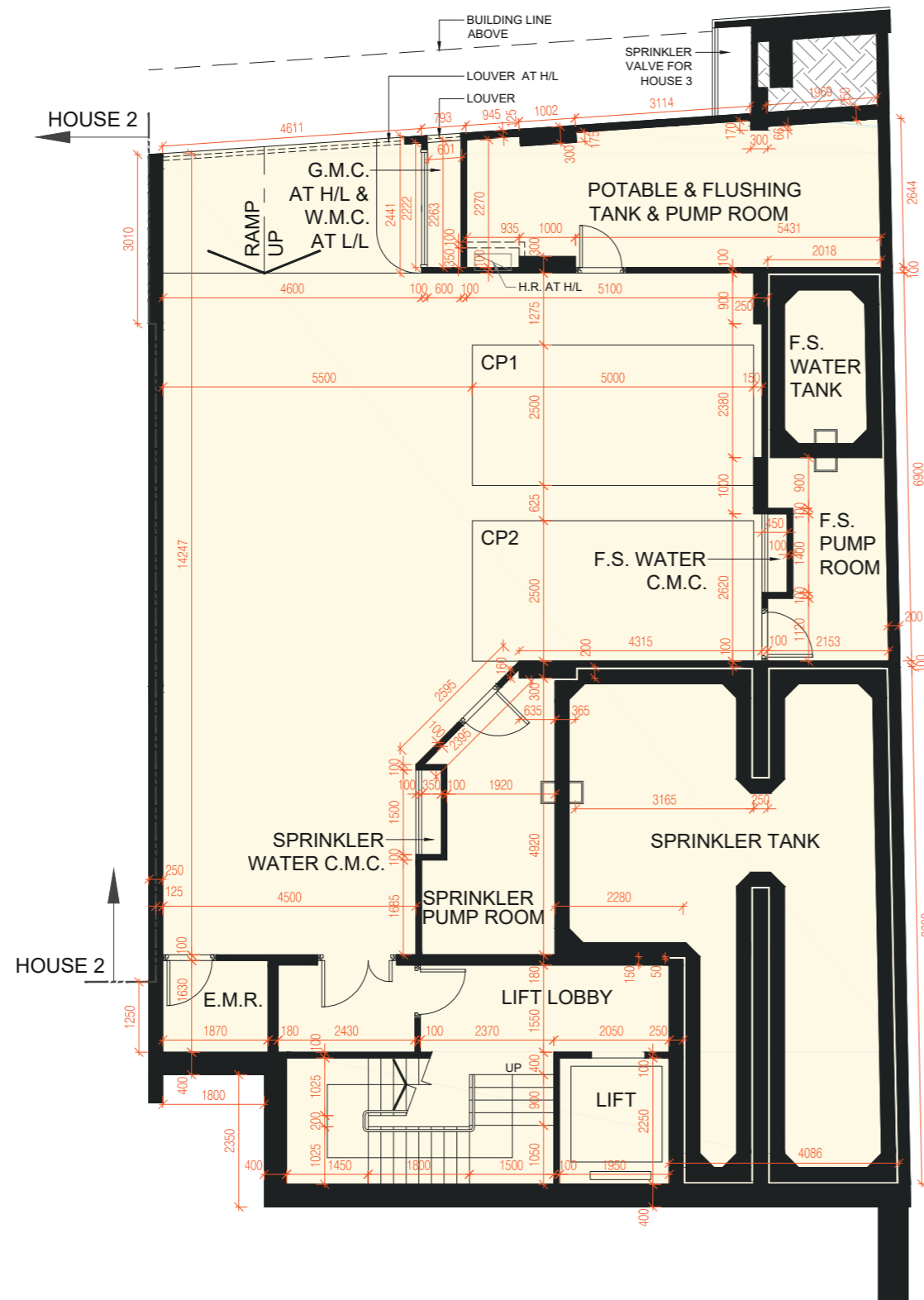
1. The dimensions in floor plans are all structural dimensions in millimeter.
2. Please refer to page 20 of this sales brochure for the legends of the terms and abbreviations for the floor plans of residential properties.

備註：

1. 平面圖所列的數字為以毫米標示之建築結構尺寸。
2. 請參閱本售樓說明書第20頁為住宅物業樓面平面圖而設之名詞及簡稱的圖例。

# FLOOR PLANS OF RESIDENTIAL PROPERTIES IN THE DEVELOPMENT

## 發展項目的住宅物業的樓面平面圖



### HOUSE 3 3號獨立屋

Floor-to-floor height of LG/F (mm): 3500/4610/4700/4739/4950

Thickness of the floor slabs excluding plaster of LG/F (mm): 175/225/250

Floor-to-floor height refers to the height between the top surface of the structural slab of a floor and the top surface of the structural slab of its immediate upper floor

低層地下 — 層與層之間的高度 (毫米) : 3500/4610/4700/4739/4950

低層地下 — 樓板(不包括灰泥)的厚度 (毫米) : 175/225/250

層與層之間的高度指該樓層之石屎地台面與上一層石屎地台面之高度距離

The internal areas of the residential properties on the upper floors will generally be slightly larger than those on the lower floors because of the reducing thickness of the structural walls on the upper floors.

因住宅物業的較高樓層的結構牆的厚度遞減，較高樓層的內部面積，一般比較低樓層的內部面積稍大。



0 10 METRES(米)

SCALE 比例

Notes :

1. The dimensions in floor plans are all structural dimensions in millimeter.
2. Please refer to page 20 of this sales brochure for the legends of the terms and abbreviations for the floor plans of residential properties.

備註 :

1. 平面圖所列的數字為以毫米標示之建築結構尺寸。
2. 請參閱本售樓說明書第20頁為住宅物業樓面平面圖而設之名詞及簡稱的圖例。

LOWER GROUND FLOOR PLAN  
低層地下平面圖

# FLOOR PLANS OF RESIDENTIAL PROPERTIES IN THE DEVELOPMENT

## 發展項目的住宅物業的樓面平面圖

### HOUSE 3 3號獨立屋

Floor-to-floor height of G/F (mm): 4500

Thickness of the floor slabs excluding plaster of G/F (mm): 175/200

Floor-to-floor height refers to the height between the top surface of the structural slab of a floor and the top surface of the structural slab of its immediate upper floor

地下 - 層與層之間的高度 (毫米) : 4500

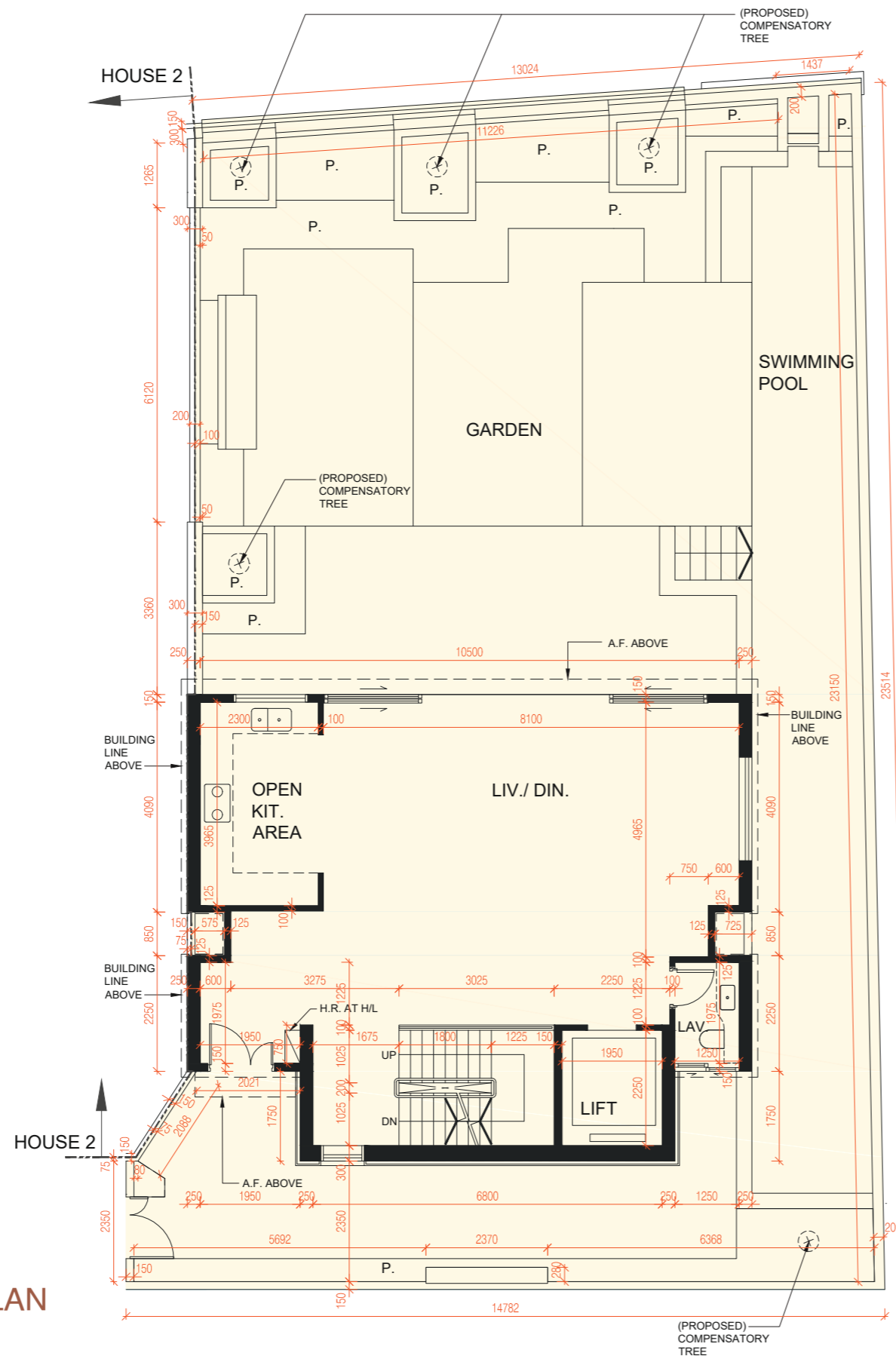
地下 - 樓板(不包括灰泥)的厚度 (毫米) : 175/200

層與層之間的高度指該樓層之石屎地台面與上一層石屎地台面之高度距離

The internal areas of the residential properties on the upper floors will generally be slightly larger than those on the lower floors because of the reducing thickness of the structural walls on the upper floors.

因住宅物業的較高樓層的結構牆的厚度遞減，較高樓層的內部面積，一般比較低樓層的內部面積稍大。

### GROUND FLOOR PLAN 地下平面圖



Notes :

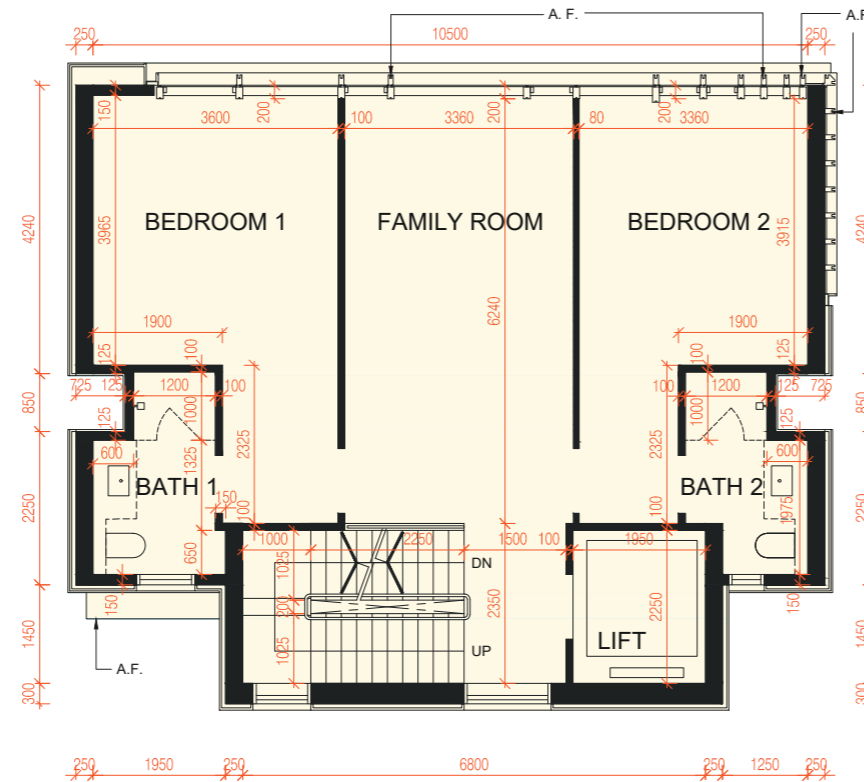
1. The dimensions in floor plans are all structural dimensions in millimeter.
2. Please refer to page 20 of this sales brochure for the legends of the terms and abbreviations for the floor plans of residential properties.

備註 :

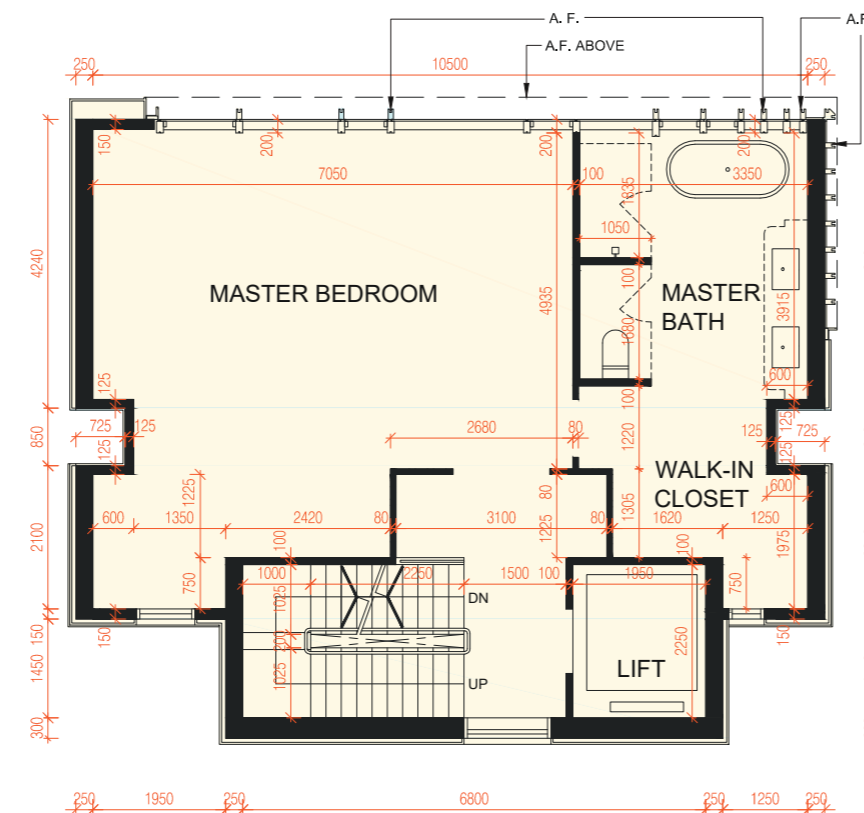
1. 平面圖所列的數字為以毫米標示之建築結構尺寸。
2. 請參閱本售樓說明書第20頁為住宅物業樓面平面圖而設之名稱及簡稱的圖例。

# FLOOR PLANS OF RESIDENTIAL PROPERTIES IN THE DEVELOPMENT

## 發展項目的住宅物業的樓面平面圖



FIRST FLOOR PLAN  
1樓平面圖



SECOND FLOOR PLAN  
2樓平面圖

## HOUSE 3 3號獨立屋

Floor-to-floor height of 1/F (mm): 3500

Floor-to-floor height of 2/F (mm): 3500

Thickness of the floor slabs excluding plaster of 1/F (mm): 175/200

Thickness of the floor slabs excluding plaster of 2/F (mm): 175/250

Floor-to-floor height refers to the height between the top surface of the structural slab of a floor and the top surface of the structural slab of its immediate upper floor

1樓 — 層與層之間的高度 (毫米) : 3500

2樓 — 層與層之間的高度 (毫米) : 3500

1樓 — 樓板(不包括灰泥)的厚度 (毫米) : 175/200

2樓 — 樓板(不包括灰泥)的厚度 (毫米) : 175/250

層與層之間的高度指該樓層之石屎地台面與上一層石屎地台面之高度距離

The internal areas of the residential properties on the upper floors will generally be slightly larger than those on the lower floors because of the reducing thickness of the structural walls on the upper floors.

因住宅物業的較高樓層的結構牆的厚度遞減，較高樓層的內部面積，一般比較低樓層的內部面積稍大。



0 10 METRES(米)

SCALE 比例

Notes :

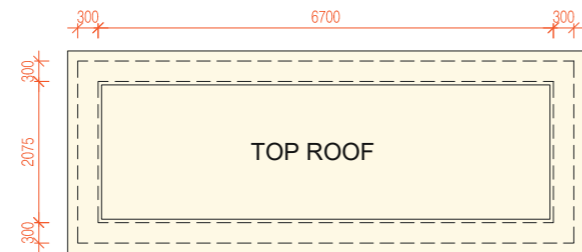
1. The dimensions in floor plans are all structural dimensions in millimeter.
2. Please refer to page 20 of this sales brochure for the legends of the terms and abbreviations for the floor plans of residential properties.

備註 :

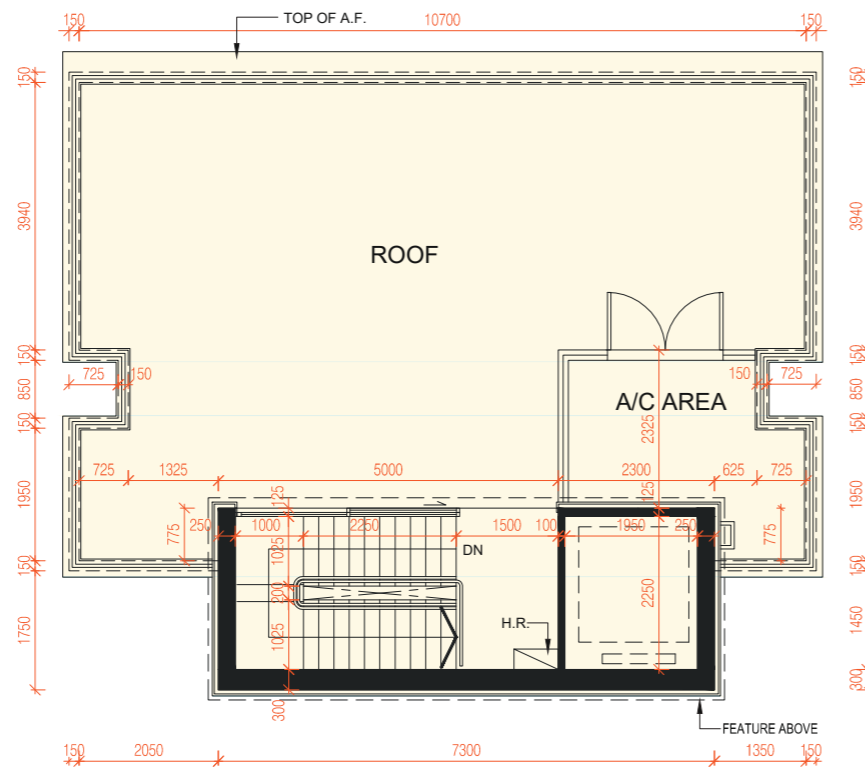
1. 平面圖所列的數字為以毫米標示之建築結構尺寸。
2. 請參閱本售樓說明書第20頁為住宅物業樓面平面圖而設之名稱及簡稱的圖例。

# FLOOR PLANS OF RESIDENTIAL PROPERTIES IN THE DEVELOPMENT

## 發展項目的住宅物業的樓面平面圖



**TOP ROOF FLOOR PLAN**  
頂層天台平面圖



**ROOF FLOOR PLAN**  
天台平面圖

## HOUSE 3 3號獨立屋

Floor-to-floor height of Roof (Stairhood) (mm): 2550

Thickness of the floor slabs excluding plaster of Roof (Stairhood) (mm): 150

Floor-to-floor height refers to the height between the top surface of the structural slab of a floor and the top surface of the structural slab of its immediate upper floor.

天台(梯屋) — 層與層之間的高度 (毫米) : 2550

天台(梯屋) — 樓板(不包括灰泥)的厚度 (毫米) : 150

層與層之間的高度指該樓層之石屎地台面與上一層石屎地台面之高度距離

The internal areas of the residential properties on the upper floors will generally be slightly larger than those on the lower floors because of the reducing thickness of the structural walls on the upper floors.

因住宅物業的較高樓層的結構牆的厚度遞減，較高樓層的內部面積，一般比較低樓層的內部面積稍大。



0 10 METRES(米)

SCALE 比例

Notes :

1. The dimensions in floor plans are all structural dimensions in millimeter.
2. Please refer to page 20 of this sales brochure for the legends of the terms and abbreviations for the floor plans of residential properties.

備註 :

1. 平面圖所列的數字為以毫米標示之建築結構尺寸。
2. 請參閱本售樓說明書第20頁為住宅物業樓面平面圖而設之名詞及簡稱的圖例。

# AREA OF RESIDENTIAL PROPERTIES IN THE DEVELOPMENT

## 發展項目中的住宅物業的面積

Description of Residential Property 物業的描述	Saleable Area (including balcony, utility platform and verandah, if any) sq.metre (sq.ft.) 實用面積 (包括露台、工作平台及 陽台(如有)) 平方米(平方呎)	Area of other specified items (Not included in the Saleable Area) sq. metre (sq.ft.) 其他指明項目的面積(不計算入實用面積) 平方米(平方呎)									
		Air-conditioning plant room 空調機房	Bay window 窗台	Cockloft 閣樓	Flat roof 平台	Garden 花園	Parking space 停車位	Roof 天台	Stairhood 梯屋	Terrace 前庭	Yard 庭院
House 1 1號獨立屋	476.816 (5,132) Balcony 露台 : -- (--); Utility Platform 工作平台 : -- (--)	-	-	-	-	259.533 (2,794)	115.015 (1,238)	112.350 (1,209)	11.587 (125)	-	-

### Notes:

- The saleable area of the residential property and the floor area of balcony, utility platform and verandah (if any) are calculated in accordance with Section 8 of the Residential Properties (First-hand Sales) Ordinance; and the areas of other specified items (not included in the saleable area) are calculated in accordance with Part 2 of Schedule 2 of the Residential Properties (First-hand Sales) Ordinance.
- Saleable Area includes areas of fire service water tank, fire service pump room, gas meter cabinet, water meter cabinet, electrical meter room, potable and flushing tank and pump room, sprinkler pump and value room and sprinkler tank (if any).
- The area of parking space includes the area of the entire carport of the House.
- The area of garden includes the area of the swimming pool of the House.
- The area of roof includes the area of the top roof of the House and the top roof is not enclosed by parapet, railing or balustrade.
- There is no balcony/utility platform/verandah in the residential properties in the Development.
- Areas in square metre as specified in the above are calculated in accordance with the latest approved building plans.
- Areas in square feet are converted at a rate of 1 square metre to 10.764 square feet and rounded off to the nearest integer square feet, which may be slightly different from that shown in square metre.

### 備註:

- 住宅物業的實用面積、以及露台、工作平台及陽台(如有)的樓面面積, 是按照《一手住宅物業銷售條例》第8條計算得出的。其他指明項目的面積(不計算入實用面積), 是按照《一手住宅物業銷售條例》附表2第2部計算得出的。
- 實用面積包括消防水箱、消防水泵房、煤氣錶櫃、水錶櫃、電錶房、食水及沖廁水水箱及泵房、灑水器水泵及閘門房及灑水器水箱(如有)之面積。
- 停車位之面積包括相關獨立屋之車庫之全部面積。
- 花園之面積包括相關獨立屋之游泳池面積。
- 天台之面積包括相關獨立屋之頂層天台面積, 而頂層天台並沒有矮牆、護欄及扶欄圍封。
- 發展項目住宅物業沒有露台/工作平台/陽台。
- 上述所列以平方米顯示之面積乃依據最近的批准建築圖則計算。
- 以平方呎顯示之面積均依據1平方米=10.764平方呎換算, 並四捨五入至整數平方呎, 與平方米表述之面積可能有些微差異。

# AREA OF RESIDENTIAL PROPERTIES IN THE DEVELOPMENT

## 發展項目中的住宅物業的面積

Description of Residential Property 物業的描述	Saleable Area (including balcony, utility platform and verandah, if any) sq.metre (sq.ft.) 實用面積 (包括露台、工作平台及 陽台(如有)) 平方米(平方呎)	Area of other specified items (Not included in the Saleable Area) sq. metre (sq.ft.) 其他指明項目的面積(不計算入實用面積) 平方米(平方呎)									
		Air-conditioning plant room 空調機房	Bay window 窗台	Cockloft 閣樓	Flat roof 平台	Garden 花園	Parking space 停車位	Roof 天台	Stairhood 梯屋	Terrace 前庭	Yard 庭院
House 2 2號獨立屋	371.988 (4,004) Balcony 露台 : -- (--); Utility Platform 工作平台 : -- (--)	-	-	-	-	166.755 (1,795)	104.736 (1,127)	81.519 (877)	10.688 (115)	-	-

### Notes:

- The saleable area of the residential property and the floor area of balcony, utility platform and verandah (if any) are calculated in accordance with Section 8 of the Residential Properties (First-hand Sales) Ordinance; and the areas of other specified items (not included in the saleable area) are calculated in accordance with Part 2 of Schedule 2 of the Residential Properties (First-hand Sales) Ordinance.
- Saleable Area includes areas of fire service water tank, fire service pump room, gas meter cabinet, water meter cabinet, electrical meter room, potable and flushing tank and pump room, sprinkler pump and value room and sprinkler tank (if any).
- The area of parking space includes the area of the entire carport of the House.
- The area of garden includes the area of the swimming pool of the House.
- The area of roof includes the area of the top roof of the House and the top roof is not enclosed by parapet, railing or balustrade.
- There is no balcony/utility platform/verandah in the residential properties in the Development.
- Areas in square metre as specified in the above are calculated in accordance with the latest approved building plans.
- Areas in square feet are converted at a rate of 1 square metre to 10.764 square feet and rounded off to the nearest integer square feet, which may be slightly different from that shown in square metre.

### 備註:

- 住宅物業的實用面積、以及露台、工作平台及陽台(如有)的樓面面積, 是按照《一手住宅物業銷售條例》第8條計算得出的。其他指明項目的面積(不計算入實用面積), 是按照《一手住宅物業銷售條例》附表2第2部計算得出的。
- 實用面積包括消防水箱、消防水泵房、煤氣錶櫃、水錶櫃、電錶房、食水及沖廁水箱及泵房、灑水器水泵及閘門房及灑水器水箱(如有)之面積。
- 停車位之面積包括相關獨立屋之車庫之全部面積。
- 花園之面積包括相關獨立屋之游泳池面積。
- 天台之面積包括相關獨立屋之頂層天台面積, 而頂層天台並沒有矮牆、護欄及扶欄圍封。
- 發展項目住宅物業沒有露台/工作平台/陽台。
- 上述所列以平方米顯示之面積乃依據最近的批准建築圖則計算。
- 以平方呎顯示之面積均依據1平方米=10.764平方呎換算, 並四捨五入至整數平方呎, 與平方米表述之面積可能有些微差異。



# AREA OF RESIDENTIAL PROPERTIES IN THE DEVELOPMENT

## 發展項目中的住宅物業的面積

Description of Residential Property 物業的描述	Saleable Area (including balcony, utility platform and verandah, if any) sq.metre (sq.ft.) 實用面積 (包括露台、工作平台及 陽台(如有)) 平方米(平方呎)	Area of other specified items (Not included in the Saleable Area) sq. metre (sq.ft.) 其他指明項目的面積(不計算入實用面積) 平方米(平方呎)									
		Air-conditioning plant room 空調機房	Bay window 窗台	Cockloft 閣樓	Flat roof 平台	Garden 花園	Parking space 停車位	Roof 天台	Stairhood 梯屋	Terrace 前庭	Yard 庭院
House 3 3號獨立屋	415.442 (4,472) Balcony 露台 : -- (--); Utility Platform 工作平台 : -- (--)	-	-	-	-	204.653 (2,203)	108.842 (1,172)	81.519 (877)	10.688 (115)	-	-

### Notes:

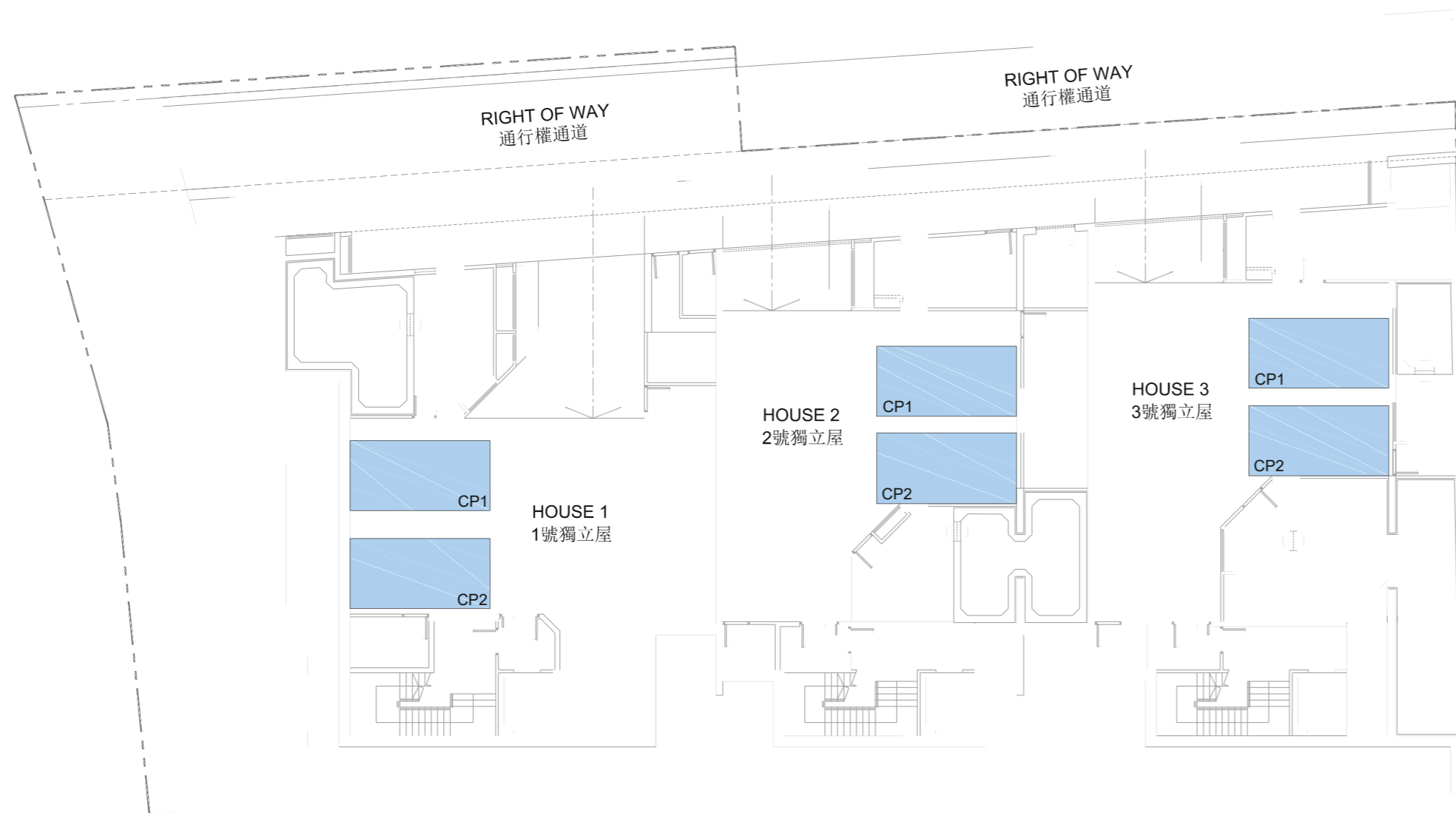
- The saleable area of the residential property and the floor area of balcony, utility platform and verandah (if any) are calculated in accordance with Section 8 of the Residential Properties (First-hand Sales) Ordinance; and the areas of other specified items (not included in the saleable area) are calculated in accordance with Part 2 of Schedule 2 of the Residential Properties (First-hand Sales) Ordinance.
- Saleable Area includes areas of fire service water tank, fire service pump room, gas meter cabinet, water meter cabinet, electrical meter room, potable and flushing tank and pump room, sprinkler pump and valve room and sprinkler tank (if any).
- The area of parking space includes the area of the entire carport of the House.
- The area of garden includes the area of the swimming pool of the House.
- The area of roof includes the area of the top roof of the House and the top roof is not enclosed by parapet, railing or balustrade.
- There is no balcony/utility platform/verandah in the residential properties in the Development.
- Areas in square metre as specified in the above are calculated in accordance with the latest approved building plans.
- Areas in square feet are converted at a rate of 1 square metre to 10.764 square feet and rounded off to the nearest integer square feet, which may be slightly different from that shown in square metre.

### 備註:



- 住宅物業的實用面積、以及露台、工作平台及陽台(如有)的樓面面積, 是按照《一手住宅物業銷售條例》第8條計算得出的。其他指明項目的面積(不計算入實用面積), 是按照《一手住宅物業銷售條例》附表2第2部計算得出的。
- 實用面積包括消防水箱、消防水泵房、煤氣錶櫃、水錶櫃、電錶房、食水及沖廁水箱及泵房、灑水器水泵及閘門房及灑水器水箱(如有)之面積。
- 停車位之面積包括相關獨立屋之車庫之全部面積。
- 花園之面積包括相關獨立屋之游泳池面積。
- 天台之面積包括相關獨立屋之頂層天台面積, 而頂層天台並沒有矮牆、護欄及扶欄圍封。
- 發展項目住宅物業沒有露台/工作平台/陽台。
- 上述所列以平方米顯示之面積乃依據最近的批准建築圖則計算。
- 以平方呎顯示之面積均依據1平方米=10.764平方呎換算, 並四捨五入至整數平方呎, 與平方米表述之面積可能有些微差異。

# FLOOR PLANS OF PARKING SPACES IN THE DEVELOPMENT

## 發展項目中的停車位的樓面平面圖



### LEGEND 圖例

-  BOUNDARY OF THE DEVELOPMENT  
發展項目的界線
-  PARKING SPACE  
停車位

### LOWER GROUND FLOOR PLAN

#### 低層地下平面圖



0  20 METRES(米)  
SCALE 比例

Location, Number, Dimensions and Area of Parking Spaces  
停車位的位置、數目、尺寸及面積

House Number 屋號	Location 位置	Number of Parking Spaces 停車位數目	Dimensions (Length x Width) (m.) 尺寸(長 x 闊) (米)	Area of Each Parking Space (sq.m.) 每個停車位面積 (平方米)
HOUSE 1 1號獨立屋	LG/F 低層地下	2	5.0 x 2.5	12.5
HOUSE 2 2號獨立屋	LG/F 低層地下	2	5.0 x 2.5	12.5
HOUSE 3 3號獨立屋	LG/F 低層地下	2	5.0 x 2.5	12.5